

FILED

RECEIVED

NOV 1953

Prepared for

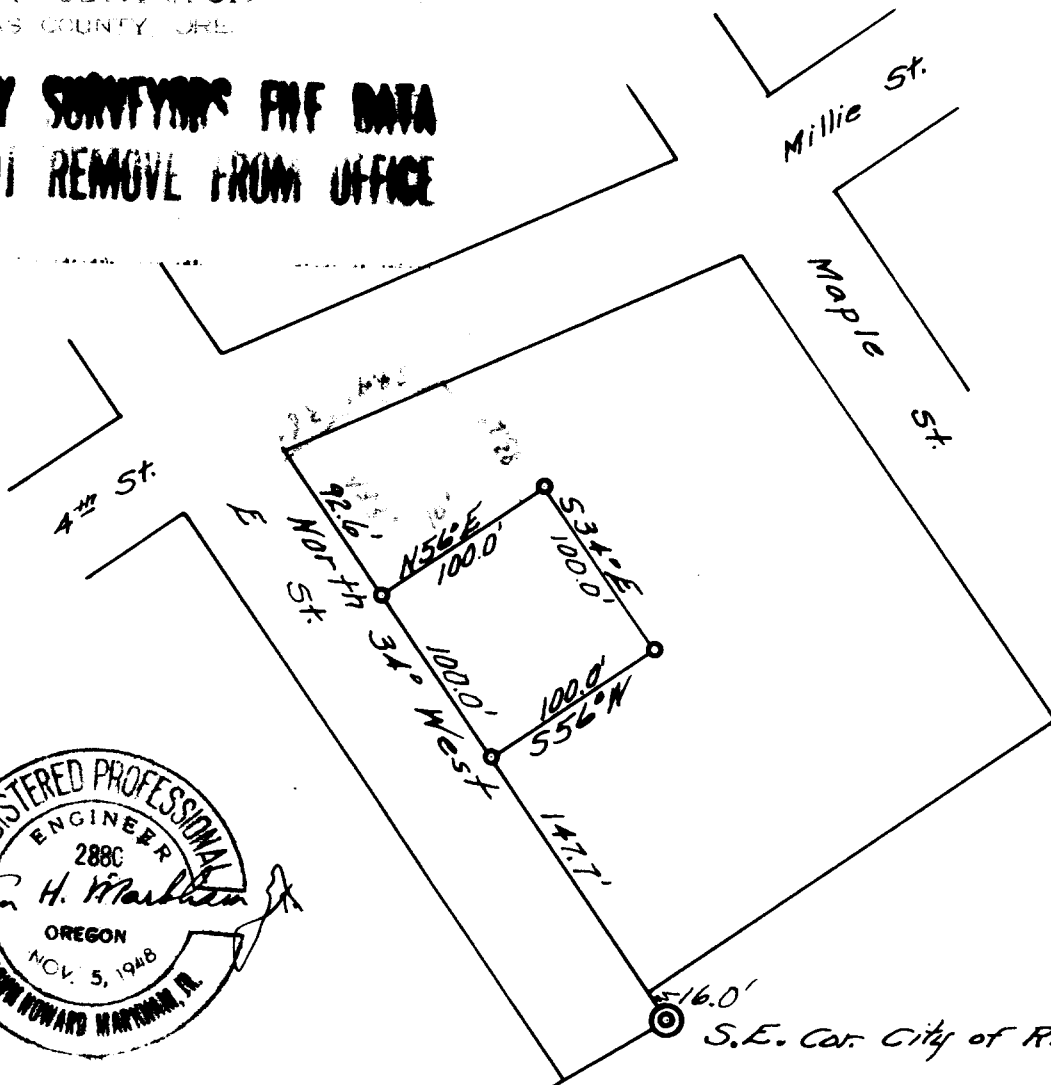
H. L. Sharp

Scale 1" = 100' Nov. 1953

COUNTY SURVEYOR  
DOUGLAS COUNTY, ORE.

**COUNTY SURVEYOR'S FILE DATA  
DO NOT REMOVE FROM OFFICE**

North



516.0'  
S.E. Cor. City of Riddle, Ore.

T. 30-6 SW NW Sec. 24 p. c. File No. 51/177-4