

COUNTY SURVEYORS FILE DATA

DO NOT REMOVE FROM OFFICE

**SURVEY OF LOT 7 & 8, BLOCK 3,
AMENDED PLAT OF WINSTON ACRES
WINSTON, DOUGLAS COUNTY, OREG.**

SURVEYED FOR: R. J. SCHMIDT

FEBRUARY, 1961

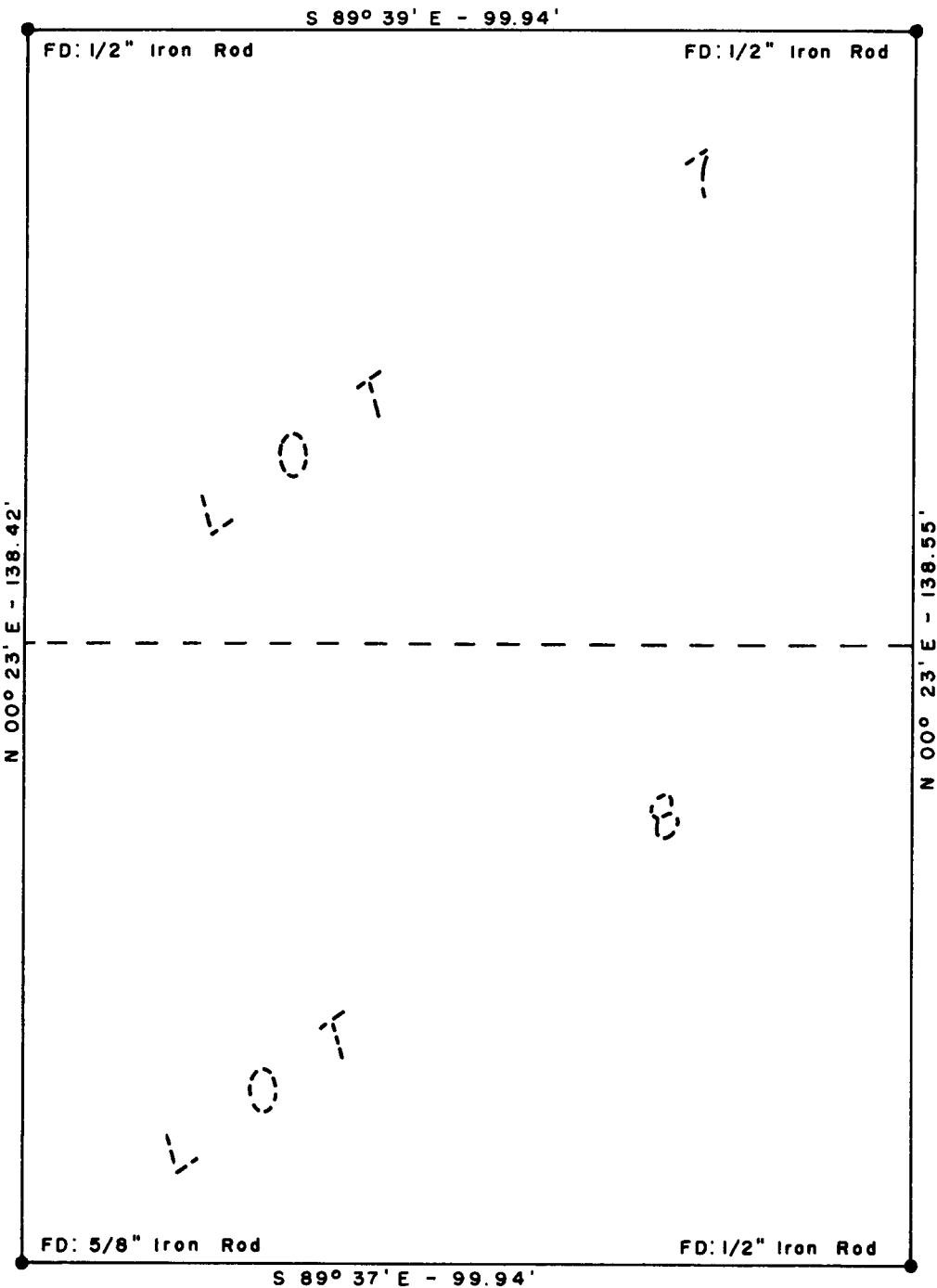
SURVEYED BY: G. ROBERT LECKLIDER - ENGINEER

SCALE: 1" = 20'



ROSE
ST.

ROSE



FILED *L.L.*
RECEIVED

FEB 1 1961

COUNTY SURVEYOR
DOUGLAS COUNTY, ORE.

C. S. File No. 51/176