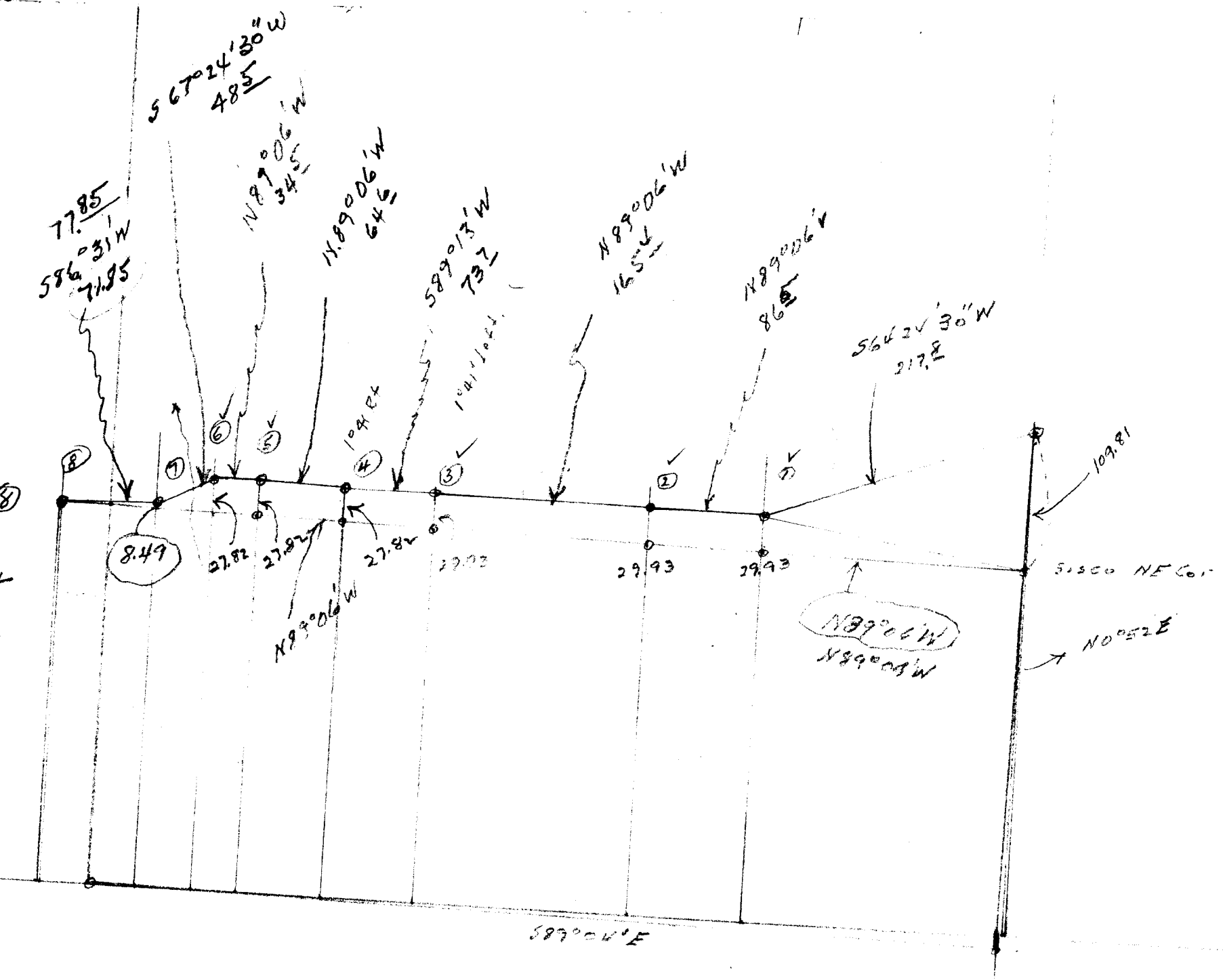


C.S. 51/1682

set on ⑧
 F.S. ⑦
 turn RT
 33°26'
 5.15'



N89°06' W
 1 41
 40 07
 179 60
 539 13 W
 1 41
 40 52
 179 60
 7189 06 W
 23 20
 112 36
 179 60
 567 22 W
 19 06
 863 0