

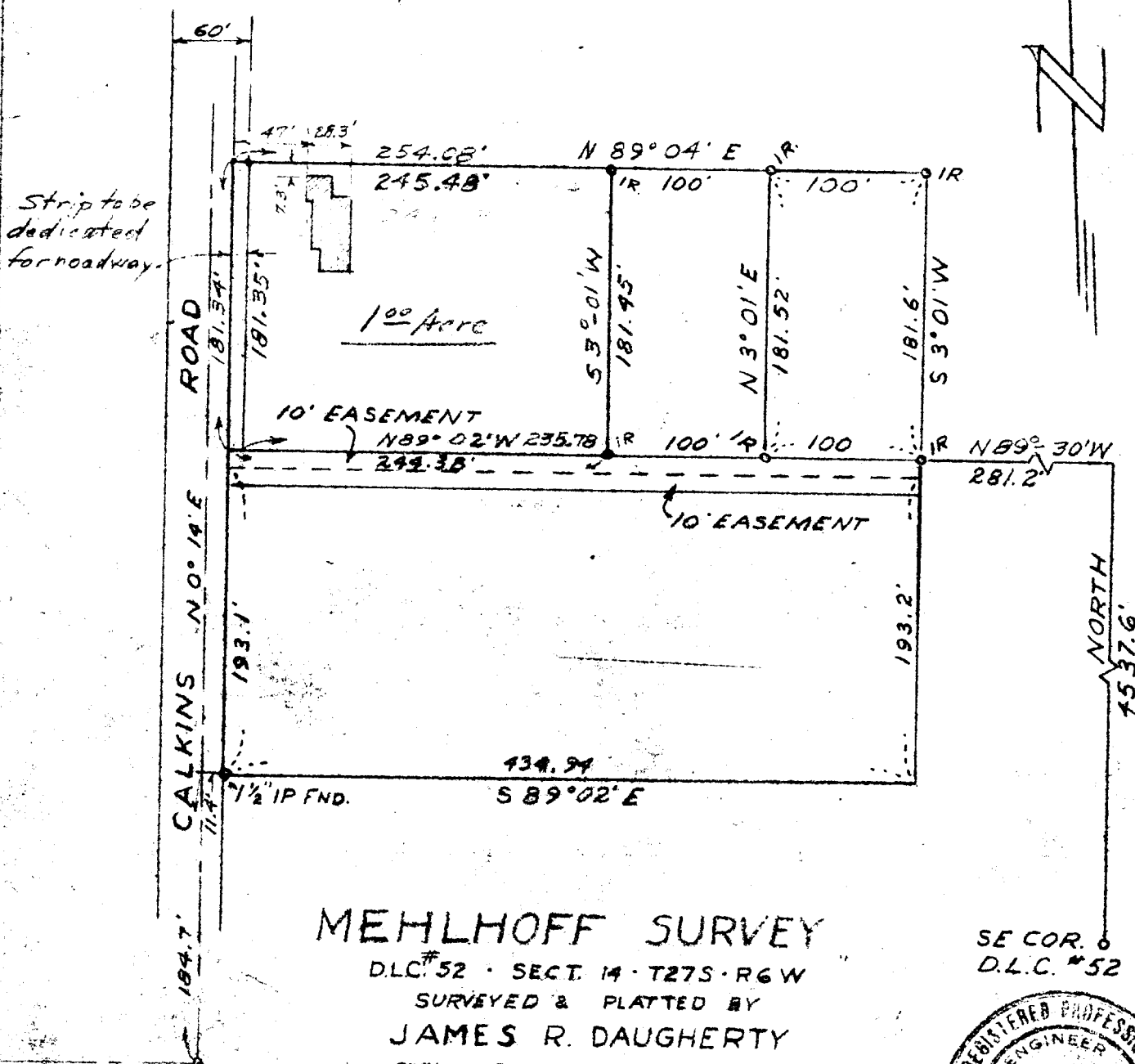
991/1582

FILED L L  
RECEIVED

JAN 13 1961

COUNTY SURVEYORS FILE DATA  
DO NOT REMOVE FROM OFFICE

COUNTY SURVEYOR  
DOUGLAS COUNTY, OREGON



### MEHLHOFF SURVEY

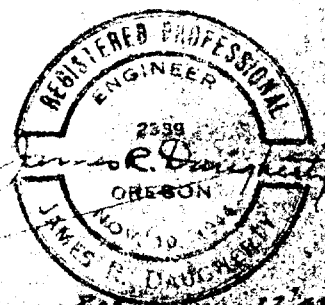
DLC #52 · SECT. 14 · T27S · R6W

SURVEYED & PLATTED BY  
**JAMES R. DAUGHERTY**  
CIVIL - SANITARY ENGINEER

214 U.S. BANK BLDG. - ROSEBURG, ORE.

SCALE: 1" = 100'

SE COR. 6  
D.L.C. #52



REV. JUN 22, 68  
REV. JUN 6, 49

C.S. File No. 2399