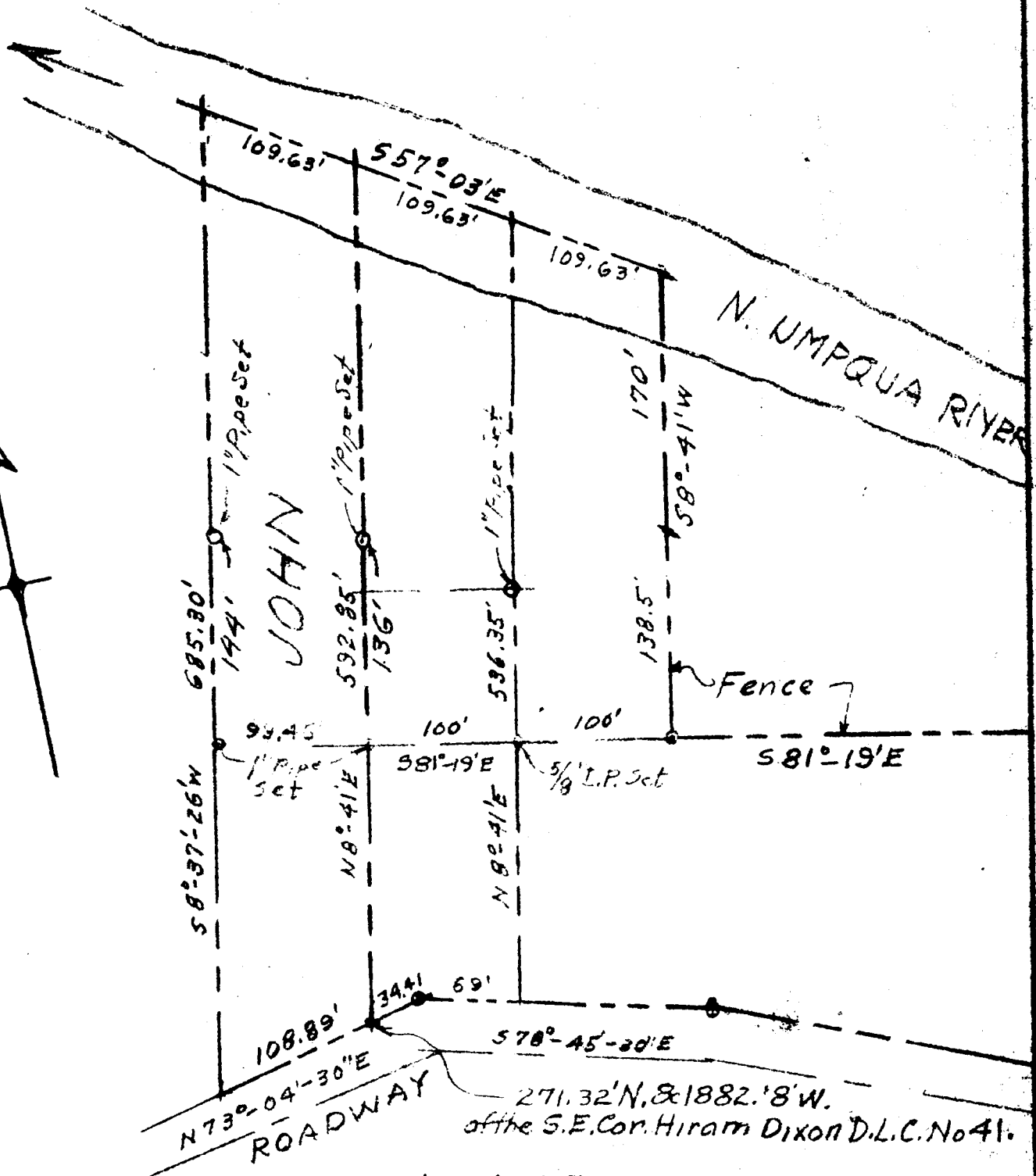


MACK A. PYLE PARCELS - SECTION 26 - T26S - R5W - W.M.
DOUGLAS COUNTY - ORE.



FILED
RECEIVED

COUNTY SURVEYOR
DOUGLAS COUNTY, ORE.

Scale 1" = 100'

Sept, 1960.

PRELIMINARY
SURVEY BY

JAMES R. DAUGHERTY

CIVIL-SANITARY ENGINEER

WINSTON - ORE.

271.32' N. & 1882.8' W.
of the S.E. Cor. Hiram Dixon D.L.C. No 41.

