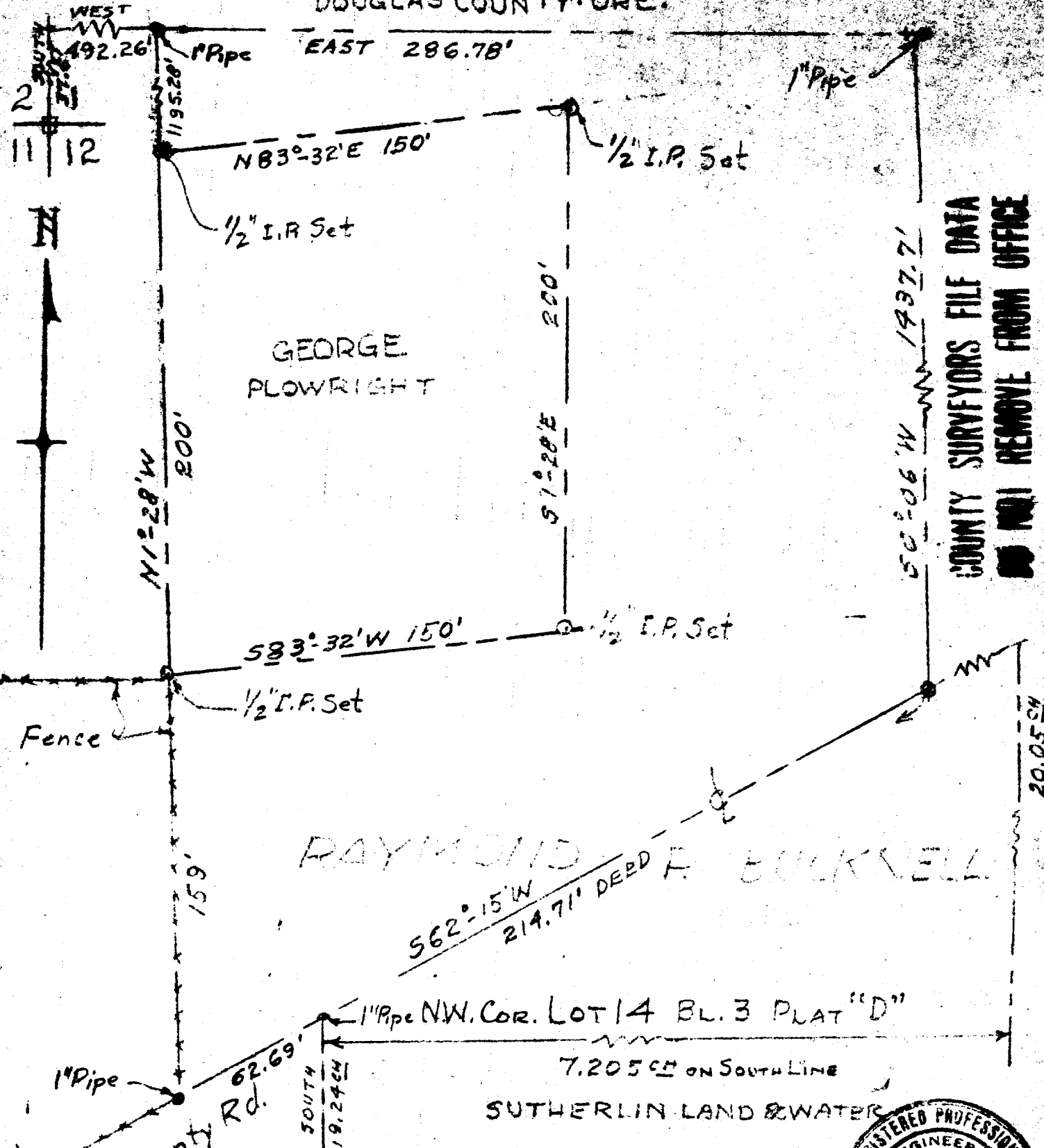


RAYMOND P. BUCKNELL PROPERTY - SECT. 12 - T25S - R5W - W1M
DOUGLAS COUNTY - ORE.



COUNTY SURVEYORS FILE DATA
DO NOT REMOVE FROM OFFICE

RAYMOND DEED R. BUCKNELL

Abandoned County Rd. 1" Pipe NW. COR. LOT 14 BL. 3 PLAT "D"
7.205 CH ON SOUTH LINE
SUTHERLIN LAND & WATER

SURVEYED BY JAMES R. DAUGHERTY
CIVIL-SANITARY ENGINEER
COUNTY SURVEYOR
DOUGLAS COUNTY, ORE.
WINSTON, ORE.

FILED RECEIVED
DEC 23 1960

REGISTERED PROFESSIONAL ENGINEER
2538
James R. Daugherty
OREGON
NOV. 19, 1944
JAMES R. DAUGHERTY

Scale 1" = 50'
Nov. 5, 1960

P. C.S. 51/157