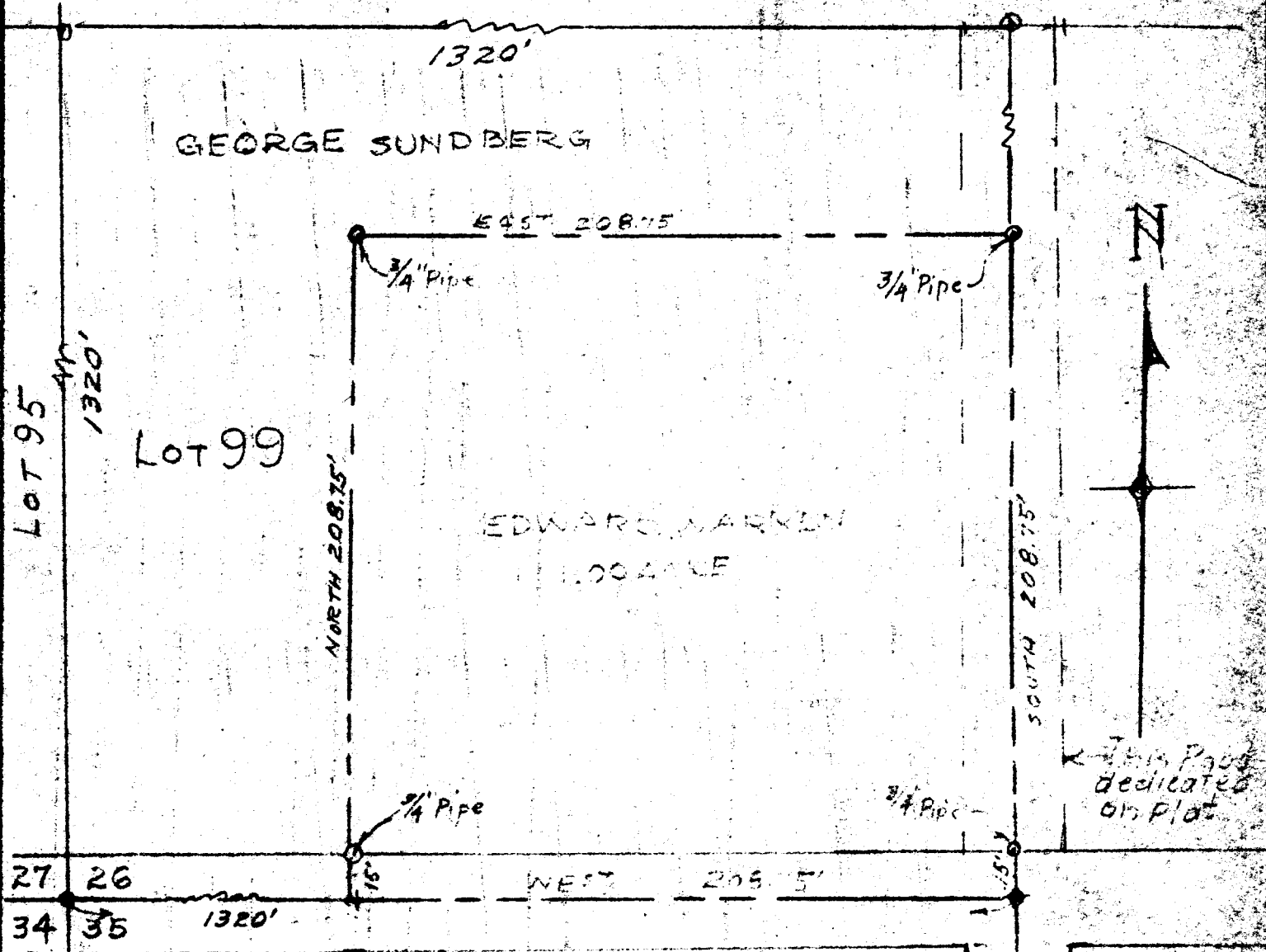


PARCEL IN LOT 99. MELROSE ORCHARDS. DOUGLAS COUNTY OREGON  
COUNTY SURVEYORS FILE DATA  
DO NOT REMOVE FROM OFFICE  
Edward Warren



3/4\"/>

FILED  
RECEIVED

DEC 23 1960

COUNTY SURVEYOR  
DOUGLAS COUNTY, ORE.

SURVEYED BY  
JAMES R. DAUGHERTY  
CIVIL SANITARY ENGINEER



WINSTON-ORE.

SCALE 1"=50'

Oct. 29, 1960.

746-7  
C.P. No. 511/5