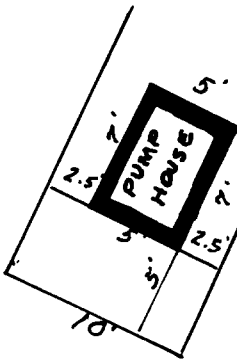


HOCKENSMITH PUMP & WATER LINE EASEMENT

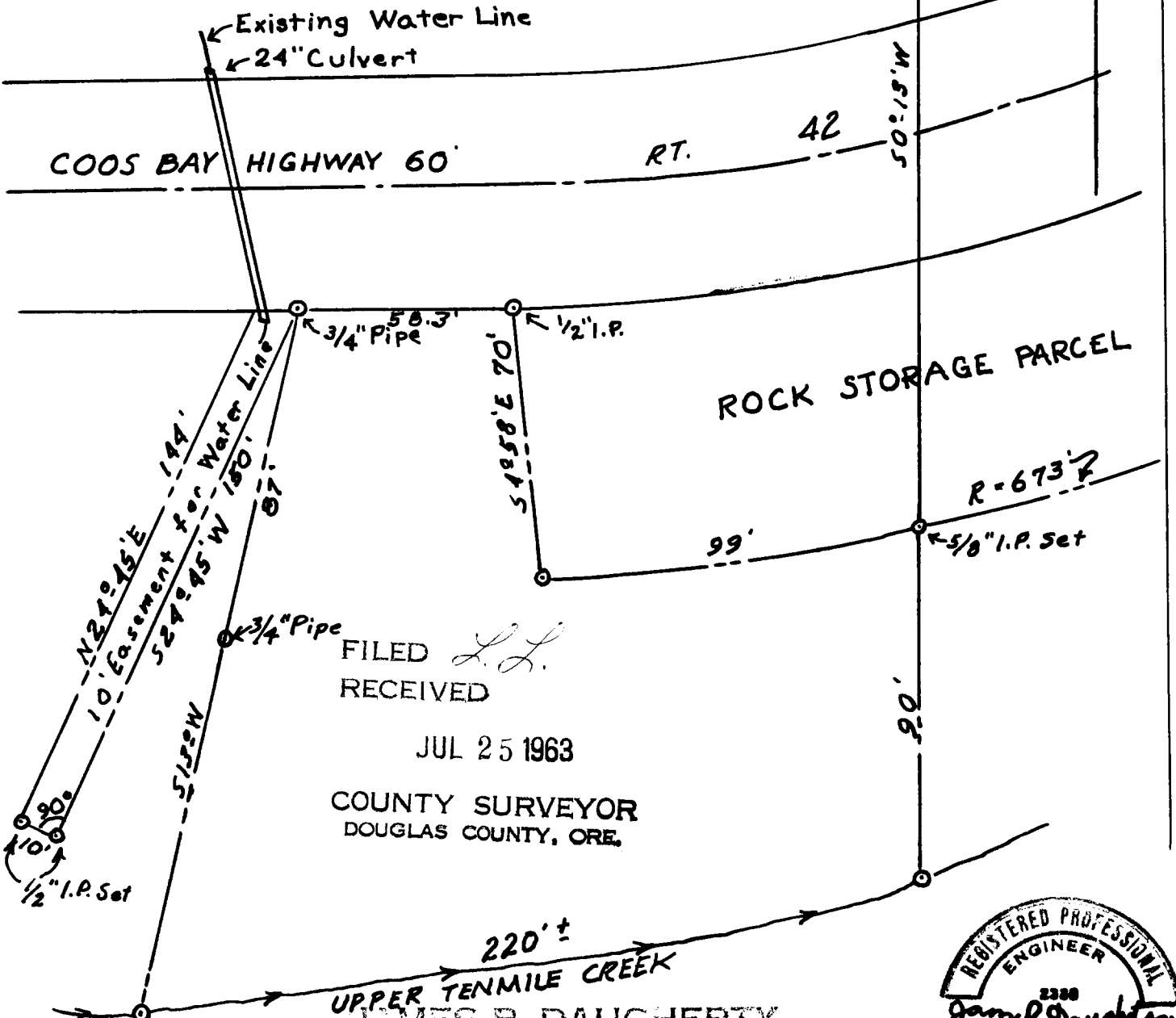
SECTION 11 · T29S · R8W · W.M. DOUGLAS COUNTY, ORE.

N88°58'W
N. Line Sec. 11
330'
¼ Cor. Sec. 11

**COUNTY SURVEYORS FILE DATA
DO NOT REMOVE FROM OFFICE**



DETAIL OF
PUMP HOUSE
LOCATION
SCALE = 1" = 10'



FILED *L.L.*
RECEIVED

JUL 25 1963

COUNTY SURVEYOR
DOUGLAS COUNTY, ORE.

SCALE 1" = 40'
JULY 20, 1963

JAMES R. DAUGHERTY
CIVIL-SANITARY ENGINEER
WINSTON, OREGON

