

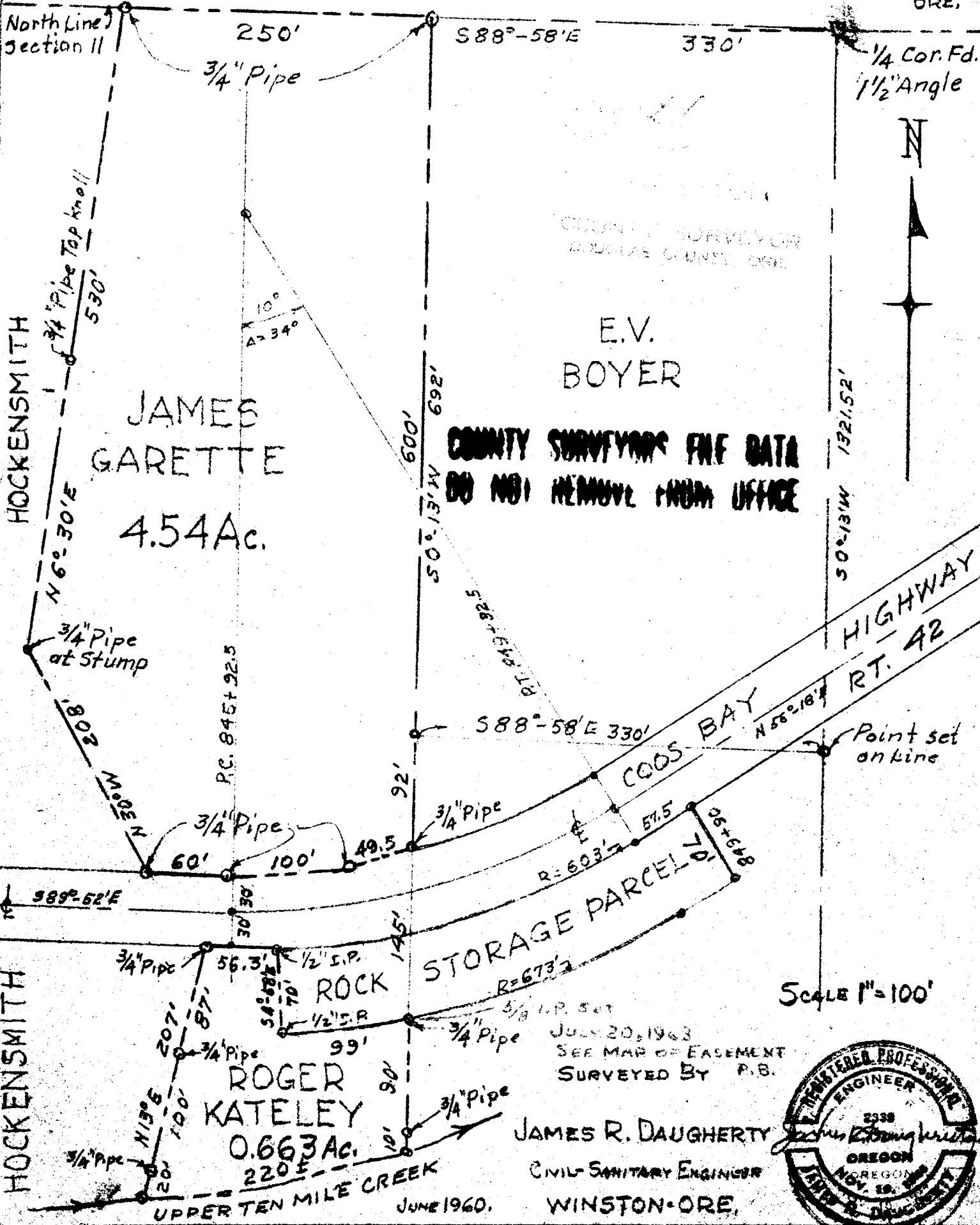
SETH B. HOCKENSMITH PARCELS - SECTION 11 - T 295 - R 8W - W.M.

DOUGLAS COUNTY ORE.

North Line Section 11

HOCKENSMITH

HOCKENSMITH



COUNTY SURVEYORS FILE DATA DO NOT REMOVE FROM OFFICE

E.V. BOYER

COOS BAY HIGHWAY RT. 42

ROGER KATELEY 0.663 Ac.

JAMES R. DAUGHERTY CIVIL-SANITARY ENGINEER WINSTON-ORE.

Scale 1"=100'



JUNE 1960.