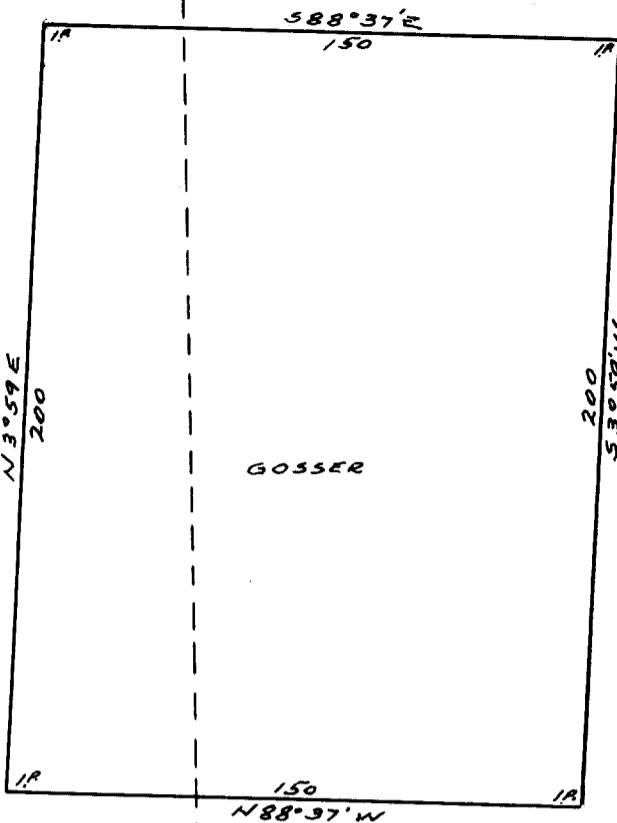


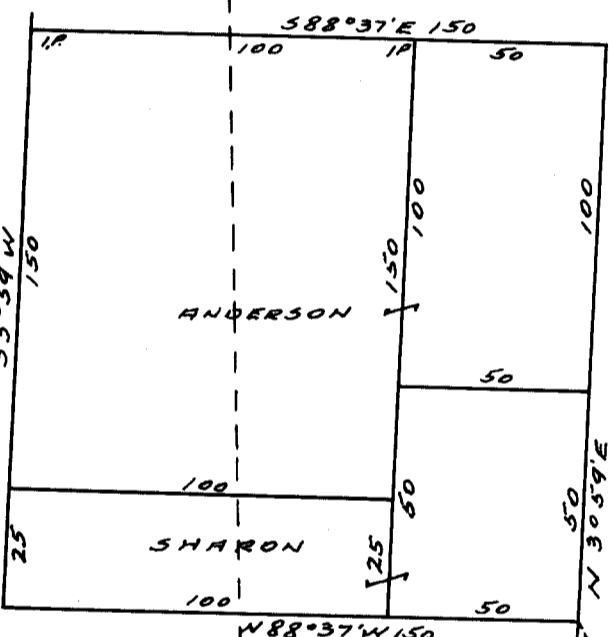
R. 12 W.



40

36

36



E OREGON COAST HWY 101

T.  
20  
S.

JUDGES

SW 1/4 SE 1/4  
SEC. 29

LOT 5

40

N 88°37'W	29	28
1/2224	32	33

**COUNTY SURVEYOR FILE DATA  
DO NOT REMOVE FROM OFFICE**

OWNERSHIPS

S.E. 1/4 SEC. 29

T. 20 S. R. 12 W. W.M.

DOUGLAS COUNTY

Scale 1" = 50' Nov. 1960.

FILED  
RECEIVED

NOV. 1960

COUNTY SURVEYOR  
DOUGLAS COUNTY, ORE.



C.S. File No. 51150 P