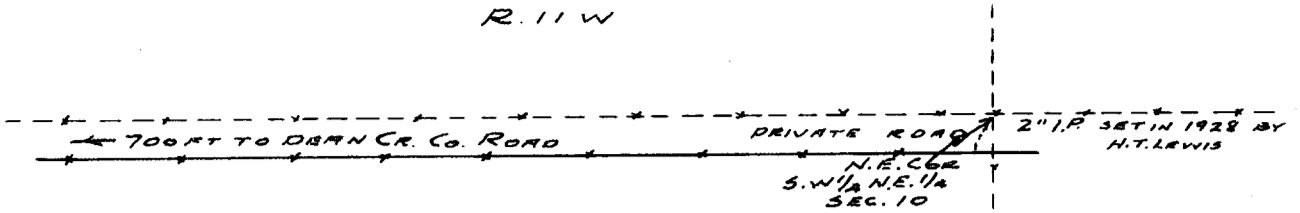


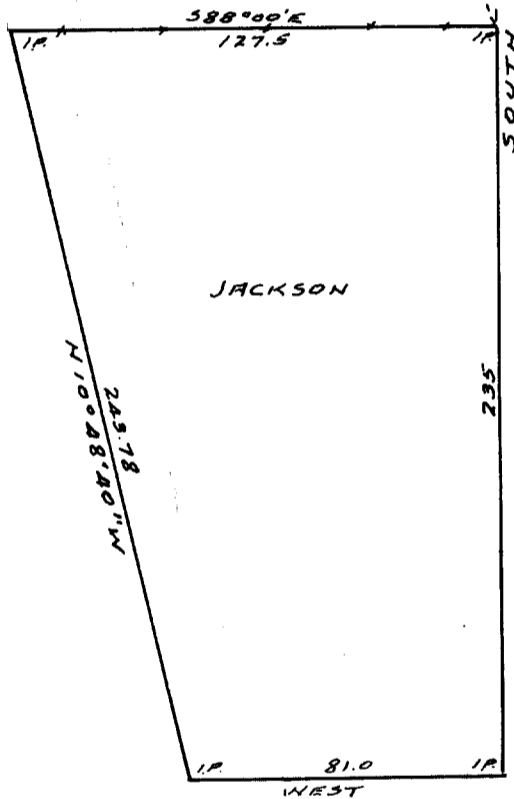
R. 11 W



VEACH

HAUSMAN

T.
22
S.



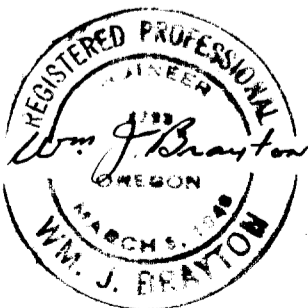
VEACH

JACKSON

FILED *LL*
RECEIVED

NOV. 1960

COUNTY SURVEYOR
DOUGLAS COUNTY, ORE.



**COUNTY SURVEYORS FILE DATA
DO NOT REMOVE FROM OFFICE**

SURVEY
D.E. JACKSON
SW 1/4 N.E. 1/4 SEC. 10
T. 22S, R. 11W, W.M.
DOUGLAS COUNTY
Scale 1" = 50' Nov. 1960.

C.S. File No. 51/149P