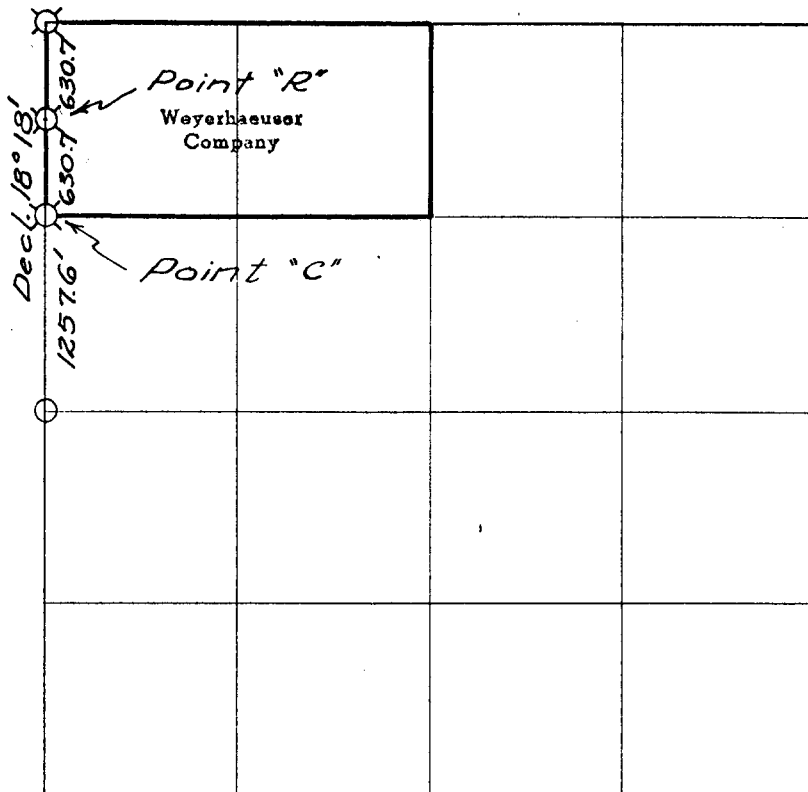


Weyerhaeuser Company

Section 3 Township 22 S. Range 5 W.



— # — # — Line marked by notch cut in blaze

- Known corner
- ⊗ Referenced corner

Staff compass and abney slope chain survey.

This survey was made for Weyerhaeuser Company by William L. Wilt under the supervision of Lester E. Calder, Oregon Licensed Engineer, Registration No. 2149.

Helper: Robert Barta



Dates of survey October, 1960 Date filed for record & where December, 1960

Distribution

Douglas County Surveyor's Office

W. Co. -Spfld. Land Dept.
 " - " Survey file
 " -Tacoma Land records
 BLM-Roseburg

Reported November, 19 60
 By William L. Wilt

33	34
4	3

Corner common to Sections 33 and 34-21S-5W
3 and 4-22S-5W

GLO Survey Record - 1855

Post			Gone
30" Fir	S 23° W	174 lks.	Gone
36" Fir	S 15° E	256 lks.	Gone
24" Fir	N 3½° E	211 lks.	Gone
20" Fir	N 80° W	309 lks.	Now 44" fir stump-Scribing probably destroyed in logging.

County Survey Record - 1938

Post			No trace
2" Iron Pipe			No trace
12" Chnqpn	N 10° E	271.5'	No trace
21" Fir	N 40° W	104.0'	Now 24" fir stump-Scribed "BT"
44" Fir	N 80° W	205.0'	Original BT
8" Alder	S 30° E	244.7'	Now 10" and dead-Scribing visible.

Set 1" x 30" aluminum pipe for corner using the two existing County BT's and the one original GLO BT.

Referenced by William Wilt (Plates and "W" nails only)
Declination 20°

6" Fir	S 70° E	82.2'	
4" In.Ced.	S 37° E	36.8'	
4" Fir	S 78° W	44.2'	
24" Fir stp	N 46° W	104.0'	(CSBT)

N 1/16

Corner common to Sections 3 and 4-22S-5W=Point "C"

Set 1" x 30" aluminum pipe for corner by single proportionate method.

Referenced by William Wilt (Plates and "W" nails only).
Declination 20°

24" Fir stp	N 88° E	1.1'
18" Fir	N 05° W	9.7'

4 | 3

1/4 Corner common to Sections 3 and 4-22S-5W

Found corner as renewed by Wilford N. Haines in 1959. Not referenced by Weyerhaeuser.

POINT "R" On line between Sections 3 and 4-22S-5W

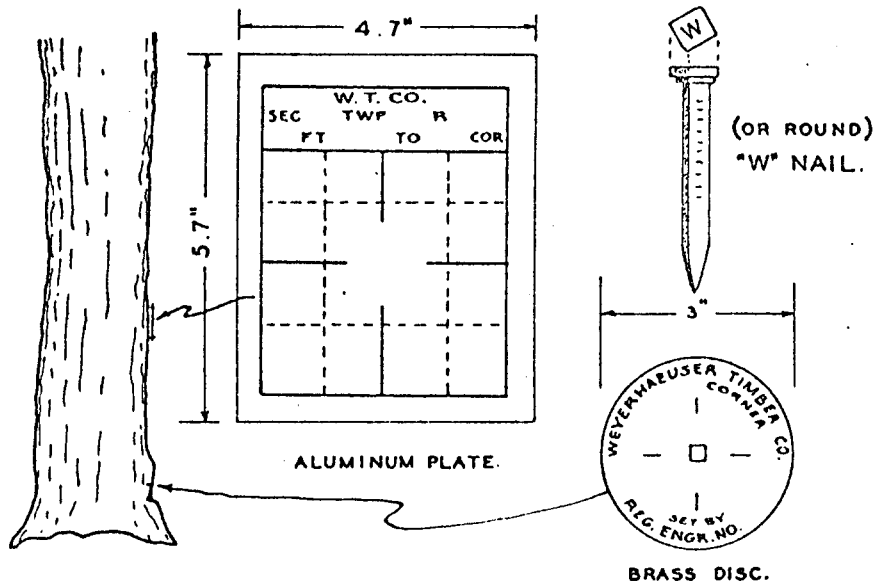
Set 1" x 30" aluminum pipe for property corner at a point midway between the N 1/16 corner and the NW corner for Section 3-22S-5W.

Referenced by William L. Wilt (Plates and "W" nails only)
Declination 20°

8" Fir	East	1.4'
8" Fir	S 28° W	8.0'

WEYERHAEUSER TIMBER COMPANY CORNER REFERENCE METHOD

A "W" nail driven thru the hole in a brass disc, into a notch cut low on a tree, stamped with the Oregon registered land surveyor or professional engineer registration number. An embossed aluminum plate nailed head high on same tree with 8d aluminum nails, with distance and bearing from the "W" nail to the corner stamped on it.



FILED
RECEIVED

DEC 2 1938

COUNTY SURVEYOR
DOUGLAS COUNTY, ORE.