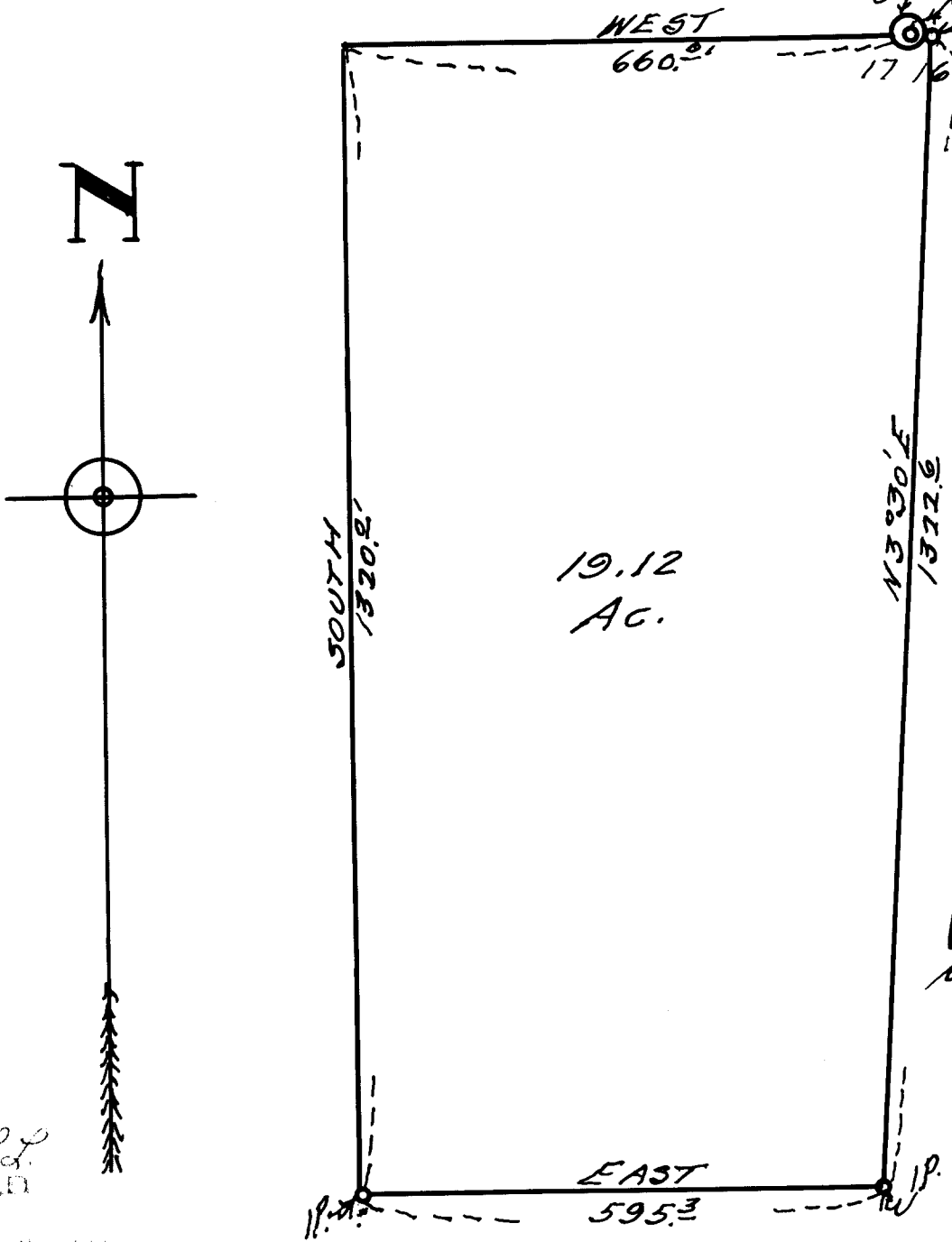


COUNTY SURVEYORS FILE DATA
 MAP DO NOT REMOVE FROM OFFICE
 OF
 PORTION
 W. FRANK BROWN PROPERTY
 IN

Sections-16 & 17 Tp. 30S Rg. 4W W.M.
 Scale-1"=200' Oct 1960.

6 sec 60' 1P-Brass Cap
 No. 1
 1P.



FILED L.S.
 RECEIVED

COUNTY SURVEYOR
 CLATSOP COUNTY, ORE.