

6	5
7	8

T.30S, R.5W.
Douglas Co. Ore.

COUNTY SURVEYOR'S FILE DATA

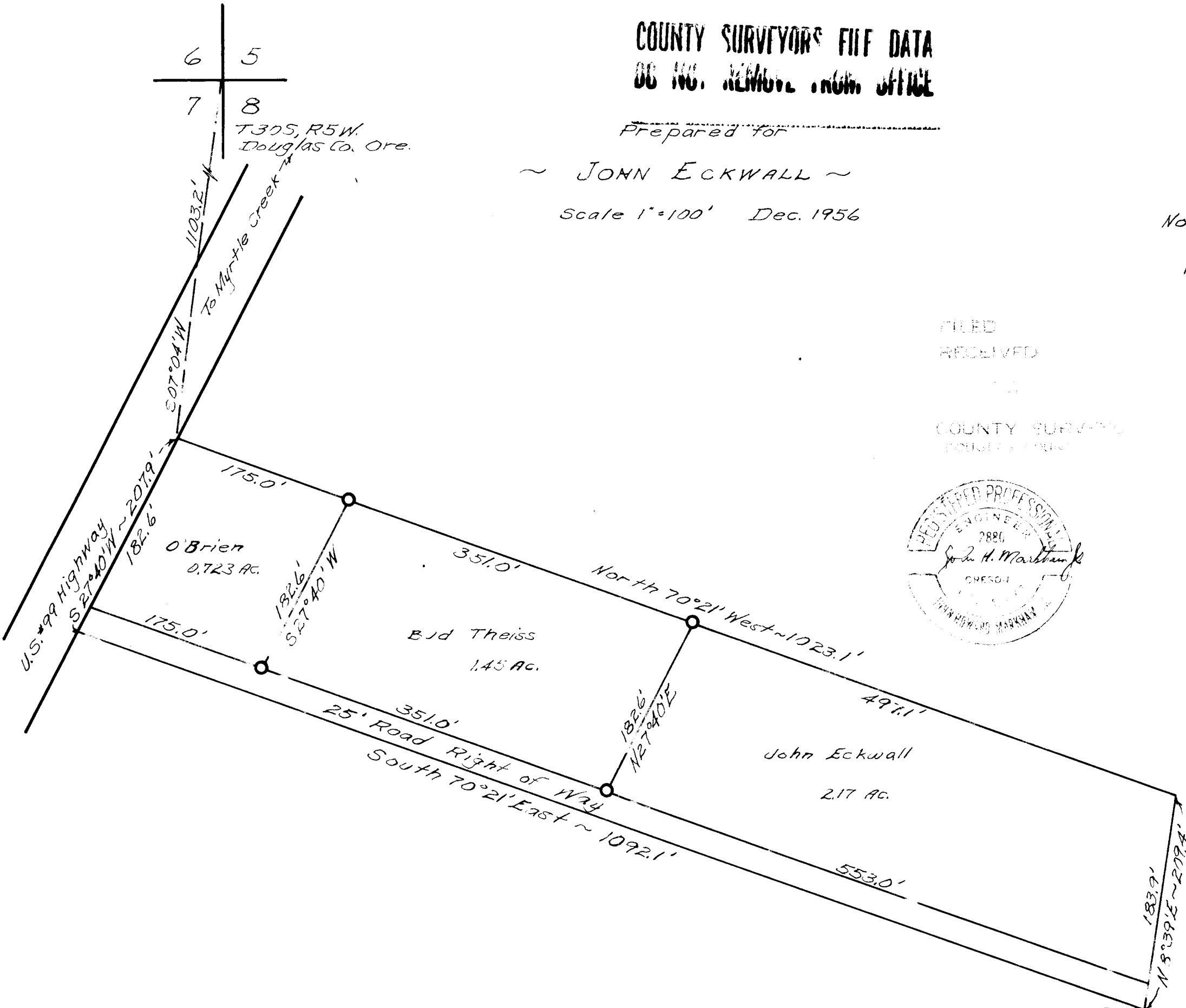
DOUGLAS COUNTY SURVEYOR'S OFFICE

Prepared for

~ JOHN ECKWALL ~

Scale 1"=100' Dec. 1956

North



FILED
RECEIVED

COUNTY SURVEYOR'S
OFFICE

