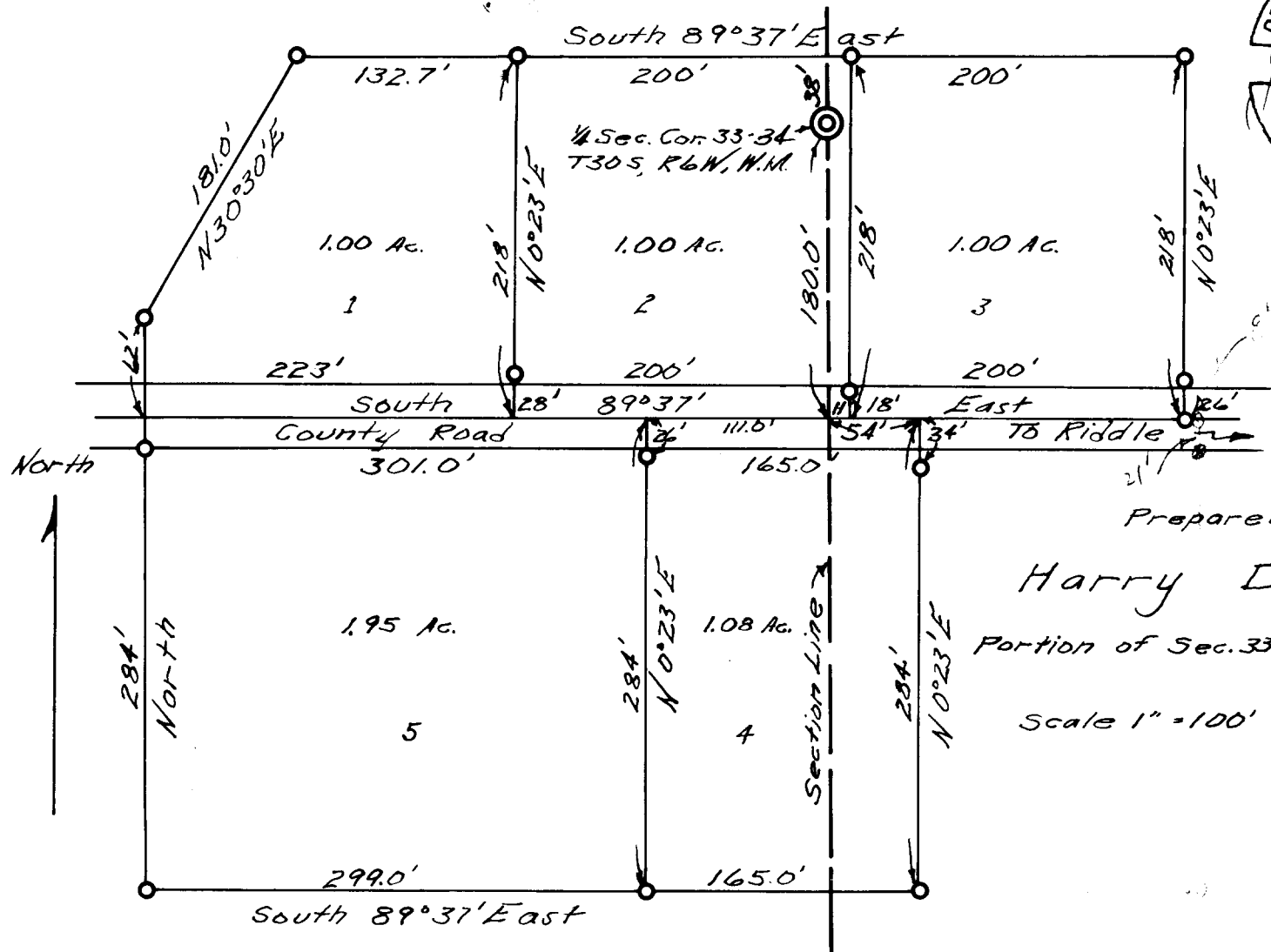


COUNTY SURVEYORS' FILE DATA
 DO NOT REMOVE FROM OFFICE



FILED
 RECEIVED
 COUNTY SURVEYOR
 DOUGLAS GIBSON

Prepared for
 Harry Dayton
 Portion of Sec. 33-34, T30S, R6W, W.M.

Scale 1" = 100' Oct. 1952.