

FILED  
RECEIVED

1954

COUNTY SURVEYOR  
DOUGLAS COUNTY, OR.

COUNTY SURVEYOR'S FILE DATA  
DO NOT REMOVE FROM OFFICE

3

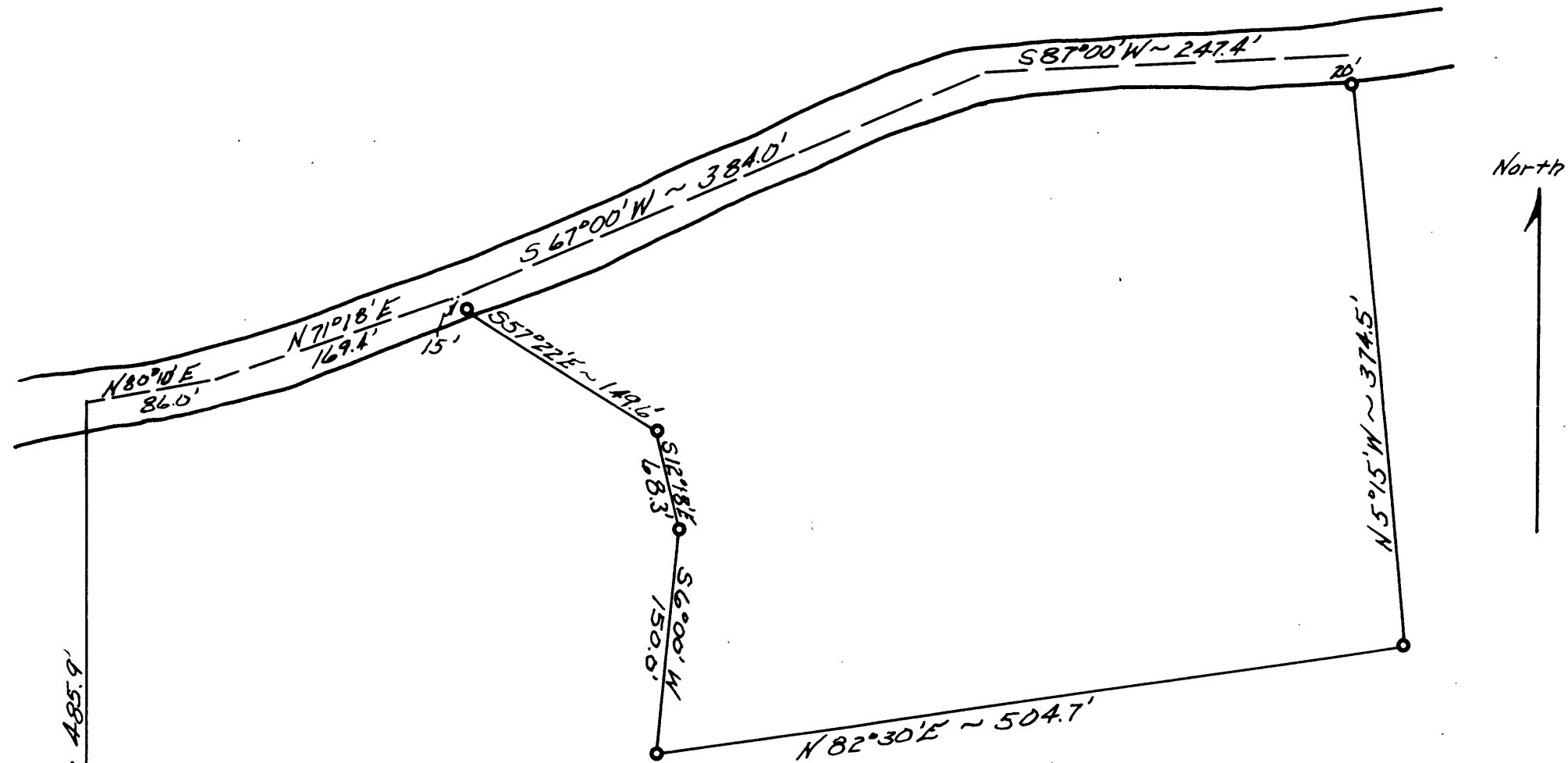
Prepared for

FRED VEDDER

Scale 1" = 100' Jan 1954

Portion of SE\*SE\* Sec. 35, T30S, R6W.

Containing 4.64 Acres ±



North 485.9'

SW. Cor. SE\*SE\* Sec. 35

1/16

N.W. Cor. NE\*NE\* Sec. 2

TWP. 30S, R6W Sec. 35  
TWP 31S, R6W Sec. 2



Plan No. 51/135-7