

FILED
RECEIVED

SEP 19 1954

COUNTY SURVEYOR
DOUGLAS COUNTY, OREGON

COUNTY SURVEYOR'S FILE DATA
DO NOT REMOVE FROM OFFICE

3

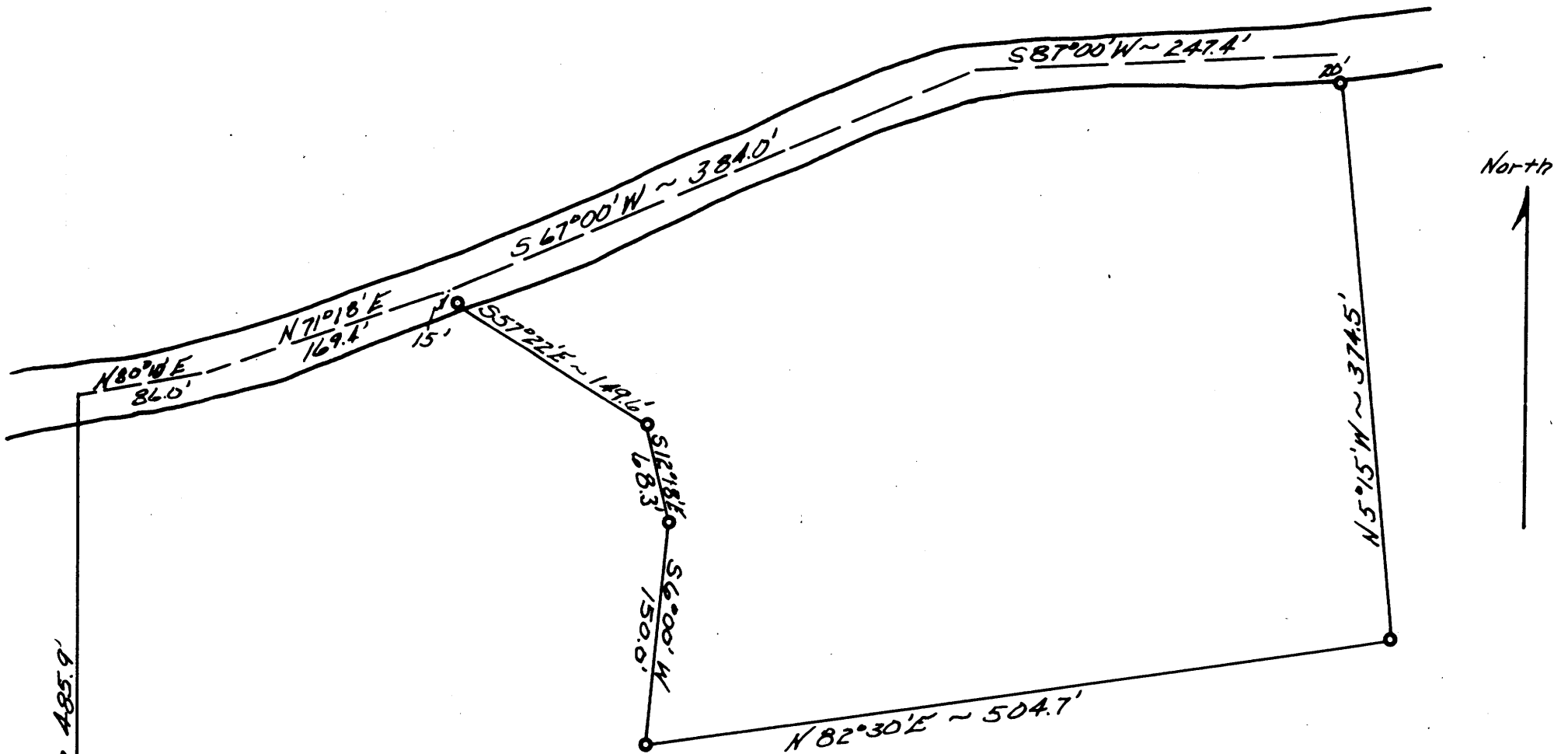
Prepared for

FRED VEDDER

Scale 1" = 100' Jan 1954

Portion of SE¹SE⁴ Sec. 35, T30S, R6W.

Containing 4.64 Acres ±



North 485.9'

North

SW. Cor. SE¹SE⁴ Sec. 35

TWP. 30S, R6W Sec. 35
TWP 31S, R6W Sec. 2

N.W. Cor. NE¹NE⁴ Sec. 2



P.C.S. File No. 51/135-7