

COUNTY SURVEYORS FILE DATA
DO NOT REMOVE FROM OFFICE

Prepared for

C. I. POOLE

Scale 1" = 100' Dec. 1950

○ Denotes 1"x30" iron pipe

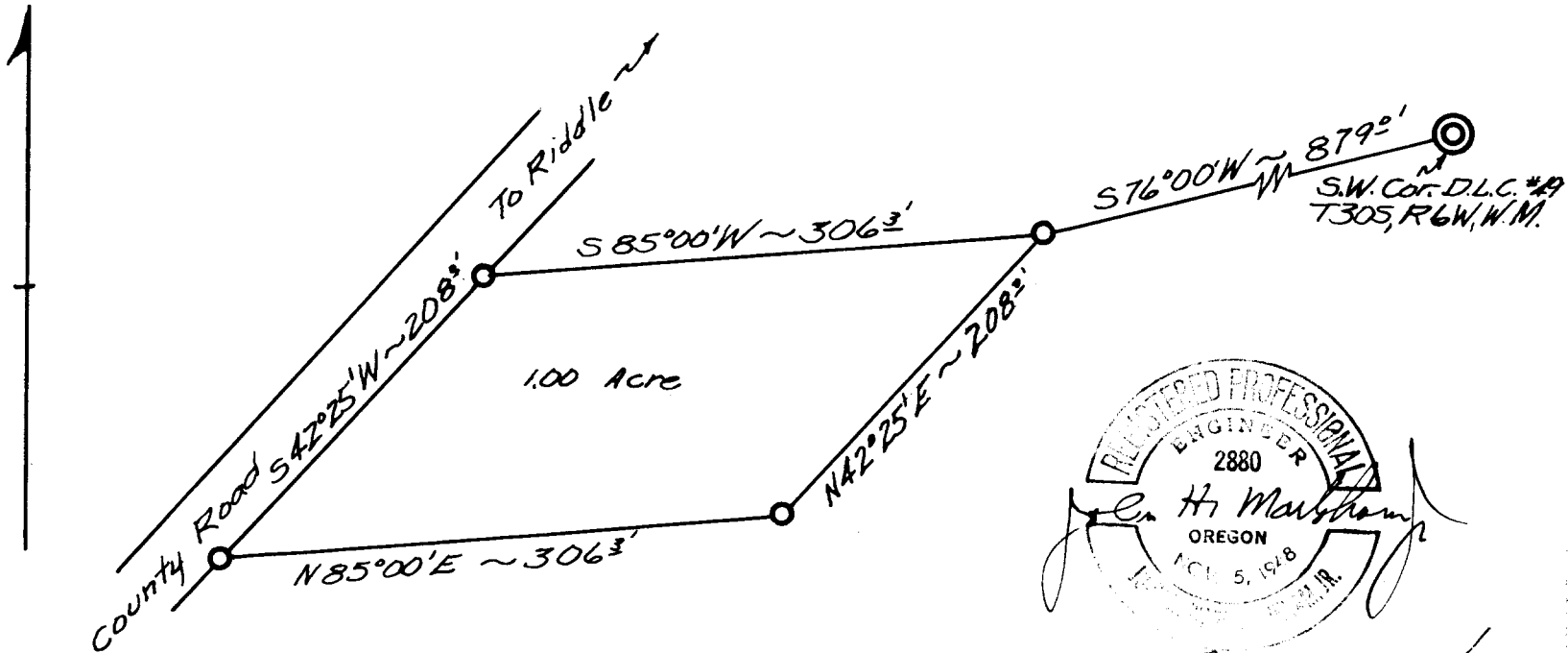
T30-6-33

FILED
RECEIVED

DEC 1950

COUNTY SURVEYOR
DOUGLAS COUNTY, OR.

North



P C. S. File No. 51/135-2