

Prepared for

FILED

ROY. E. EDWARD

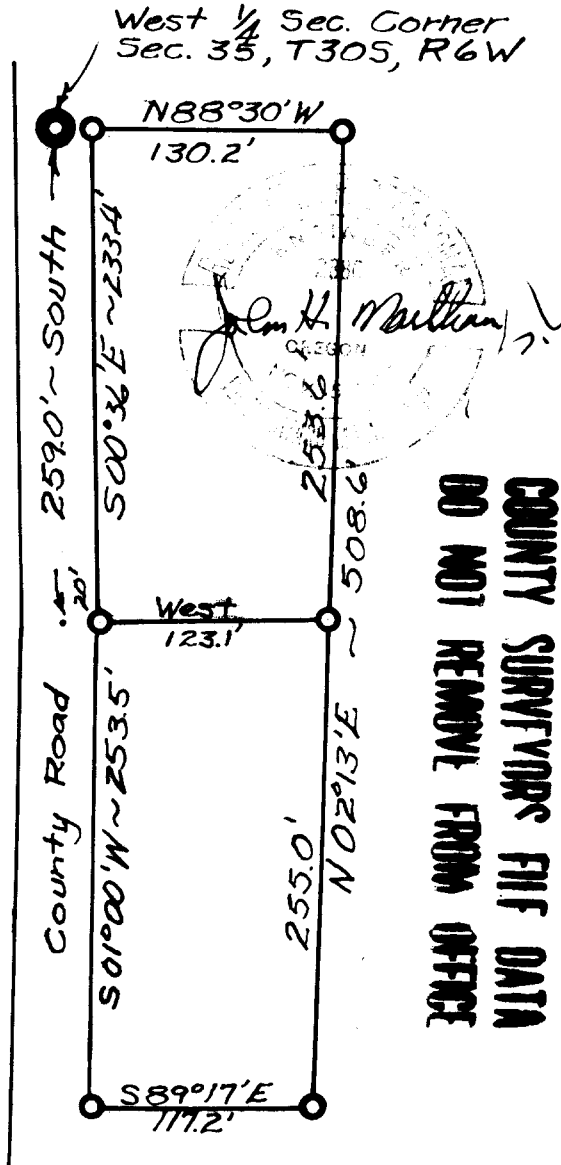
RECEIVED

OCT 19 1910

Scale 1"=100'

COUNTY ~~SEAS~~ SURVEYOR
DOUGLAS COUNTY, ORE.

West $\frac{1}{4}$ Sec. Corner
Sec. 35, T30S, R6W



COUNTY SURVEYORS FILE DATA
DO NOT REMOVE FROM OFFICE

C.S. File No. 51/135-1