

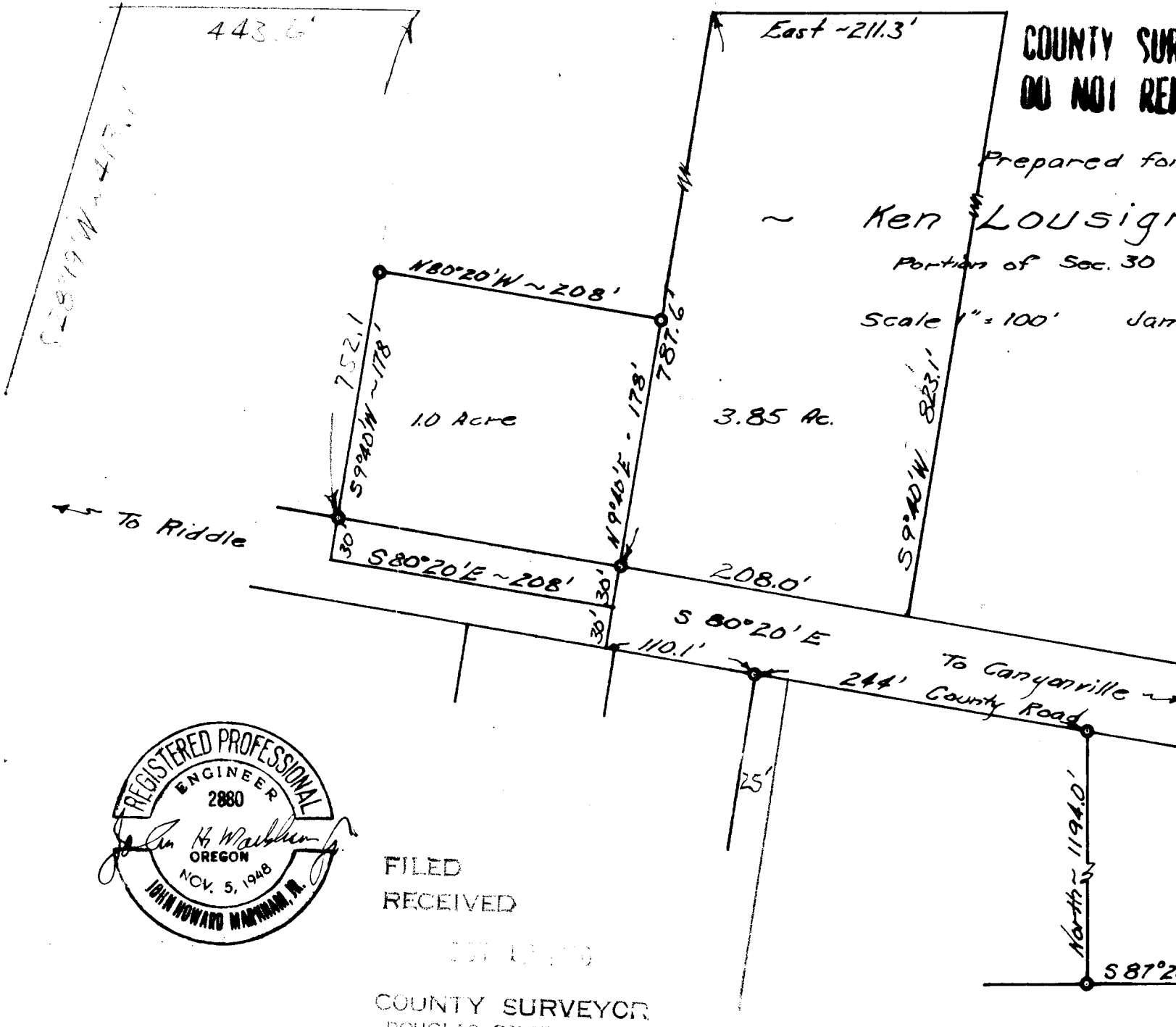
COUNTY SURVEYORS FILE DATA  
DO NOT REMOVE FROM OFFICE

Prepared for

~ Ken LOUSIGNONT ~

Portion of Sec. 30 T30S. R5W W.M.

Scale 1" = 100' Jan. 1953



FILED  
RECEIVED

COUNTY SURVEYOR  
DOUGLAS COUNTY, ORE.

