

COUNTY SURVEYORS FILE DATA
DO NOT REMOVE FROM OFFICE

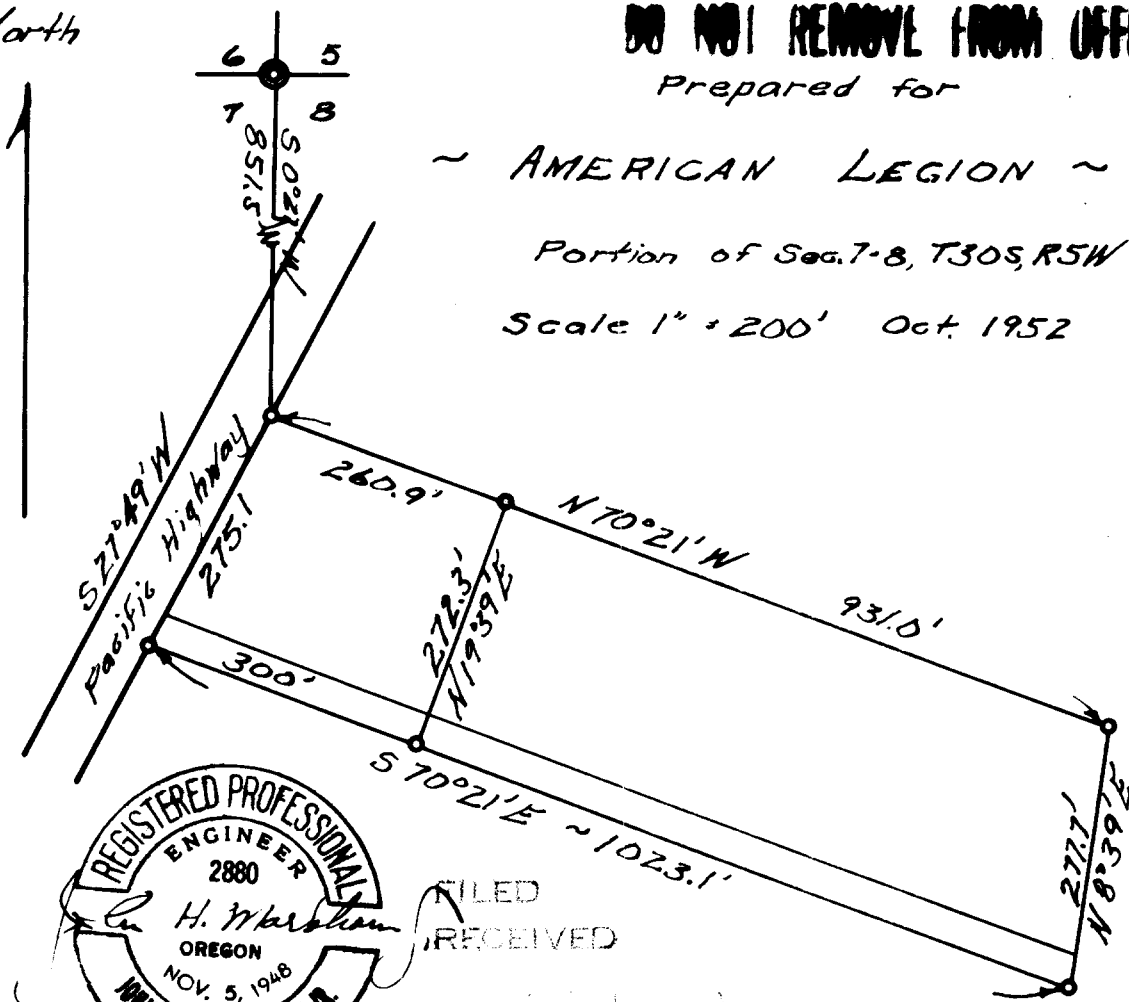
Prepared for

~ AMERICAN LEGION ~

Portion of Sec. 7-8, T30S, R5W

Scale 1" = 200' Oct. 1952

North



FILED
RECEIVED

COUNTY SURVEYOR
DOUGLAS COUNTY, OREGON

C. S. File No. 51/134-8

P