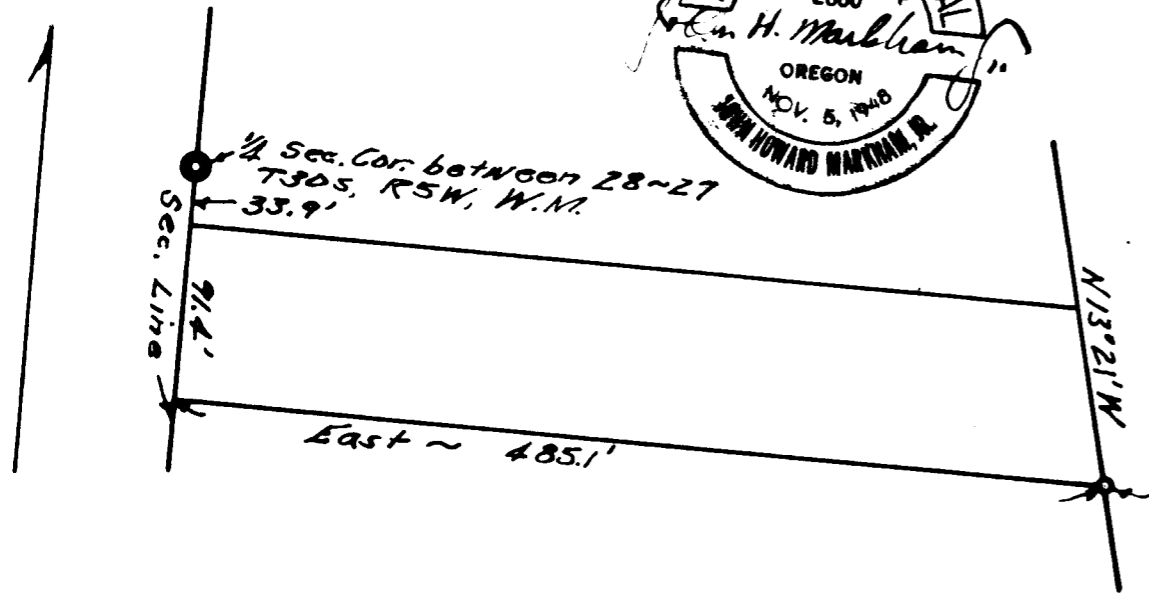


North



New Pacific Highway

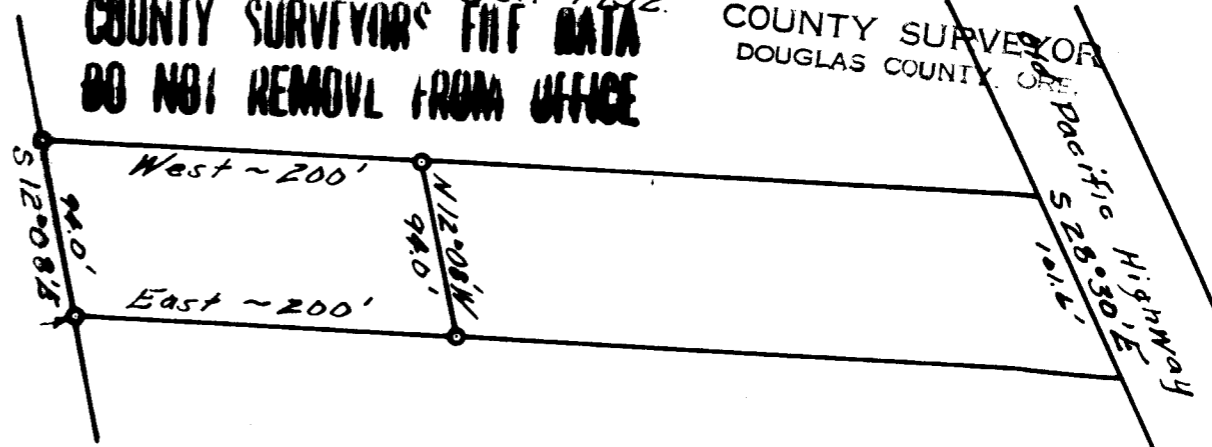
Prepared for
J. A. JELINEK ~
Portion of D.L.G. #51, T30S, R5W.

FILED
RECEIVED

OCT 12 1952

Scale 1" = 100' Oct. 1952.
COUNTY SURVEYOR'S FILE DATA
DO NOT REMOVE FROM OFFICE

COUNTY SURVEYOR
DOUGLAS COUNTY, ORE.



P. C. S. File No. 51/134-7