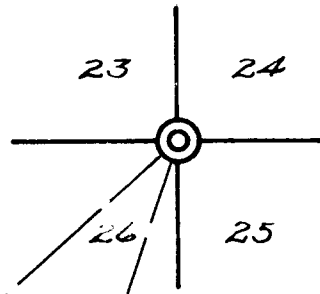


COUNTY SURVEYORS FILE DATA
DO NOT REMOVE FROM FILE

Prepared for
 ~ Wrd E. Grensky ~
 Scale 1" = 100' Feb. 1950



T30S, R5W

S18°33'W ~ 512.0'

S48°05'W ~ 858.0'

Tiller-Trail State Highway
 To Days Creek rd

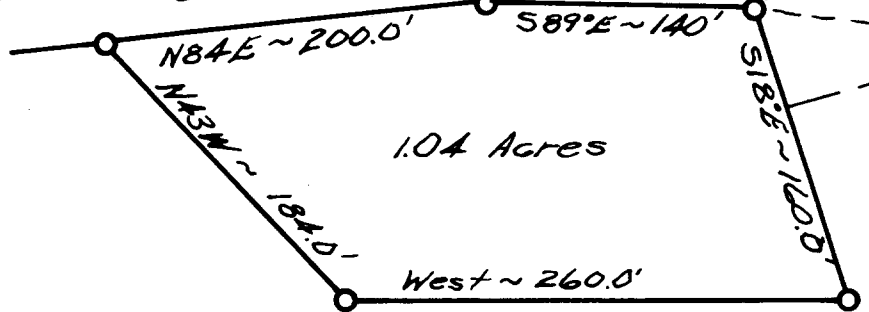
White Oak B.T. found
 S5°W ~ 337'

24" B.O. witness
 trace mhd. XXX B.T.
 S71°E
 53.0'

S74°W ~ 450.0'

Old R/W ~
 Power and pipe line easement

→ To Canyonville



John H. Marshall