

East ~ 19470'

N.W. Cor. A.J. Tiller D.L.C. #63  
T30S, R5W, W.M.

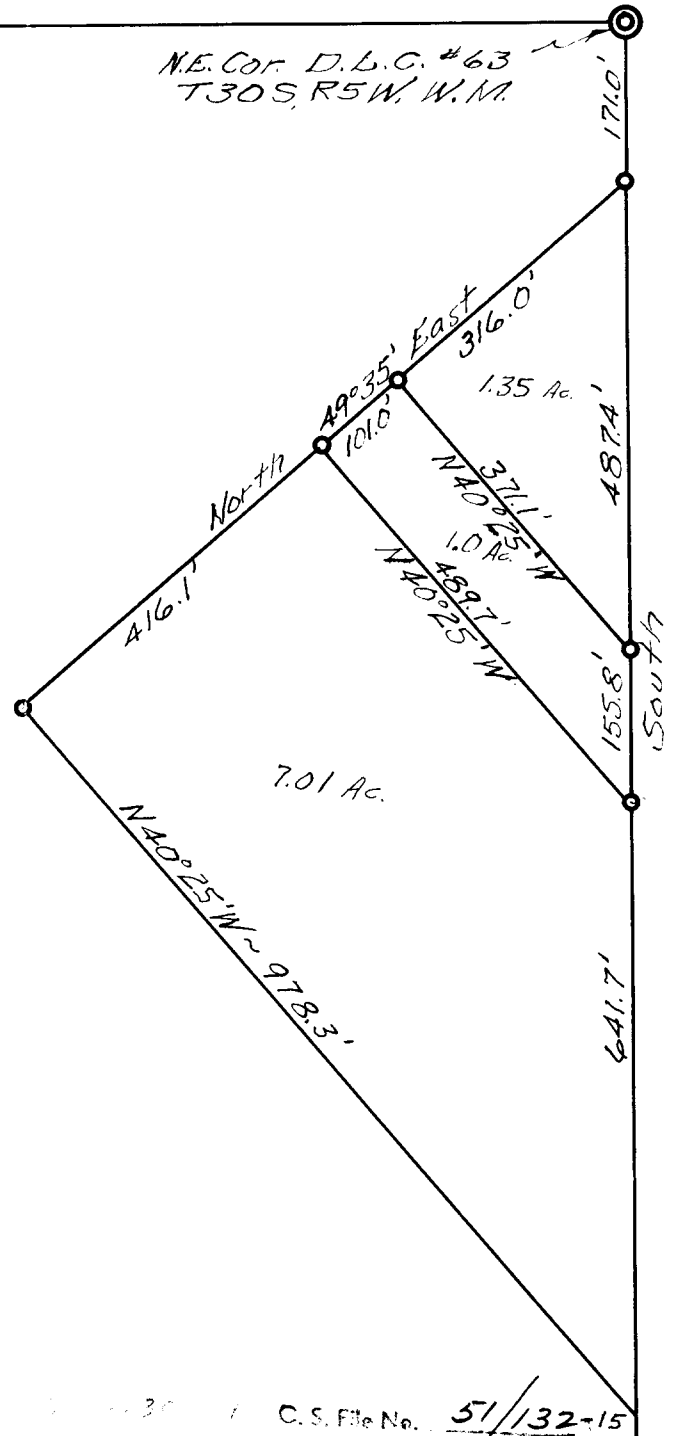
N.E. Cor. D.L.C. #63  
T30S, R5W, W.M.

**COUNTY SURVEYOR'S FILE DATA  
DO NOT REMOVE FROM OFFICE**

Prepared for

D. V. PUCKETT

Scale 1" = 200' Feb. 1954.



FILED  
RECEIVED

COUNTY SURVEYOR'S  
OFFICE

C.S. File No. 51/132-15