

Prepared for

~ H. A. BOYD ~

Scale 1" = 100' Feb. 1955

FILED  
RECEIVED

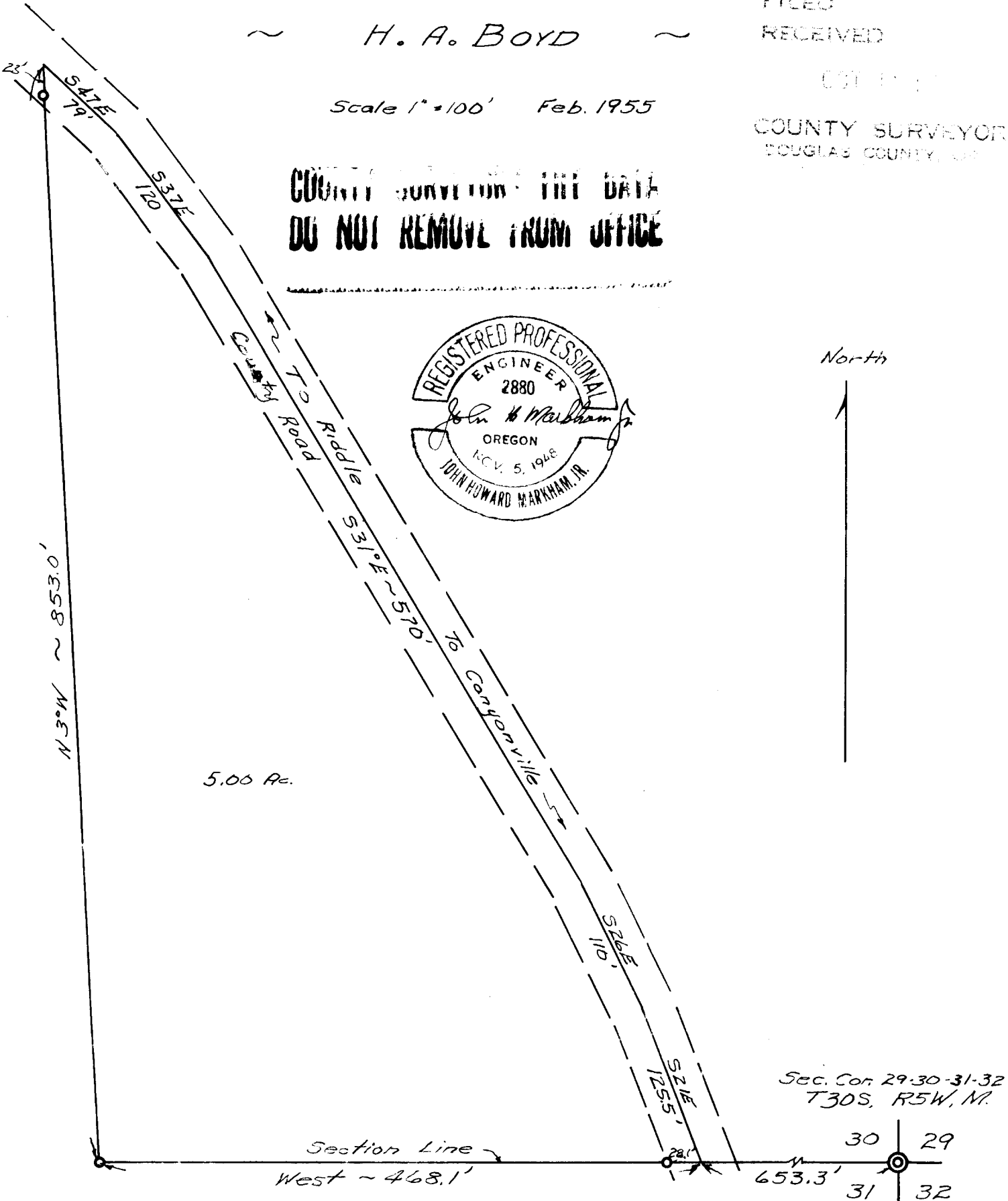
COUNTY

COUNTY SURVEYOR  
DOUGLAS COUNTY, ORE.

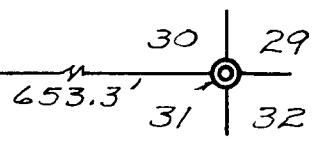
COUNTY SURVEYOR THE DATA  
DO NOT REMOVE FROM OFFICE



North



Sec. Cor 29-30-31-32  
T30S, R5W, N.



CS 51/132-14

C. S. File No. 51/132