

Prepared for
CLAUDE C. PHILLIPS

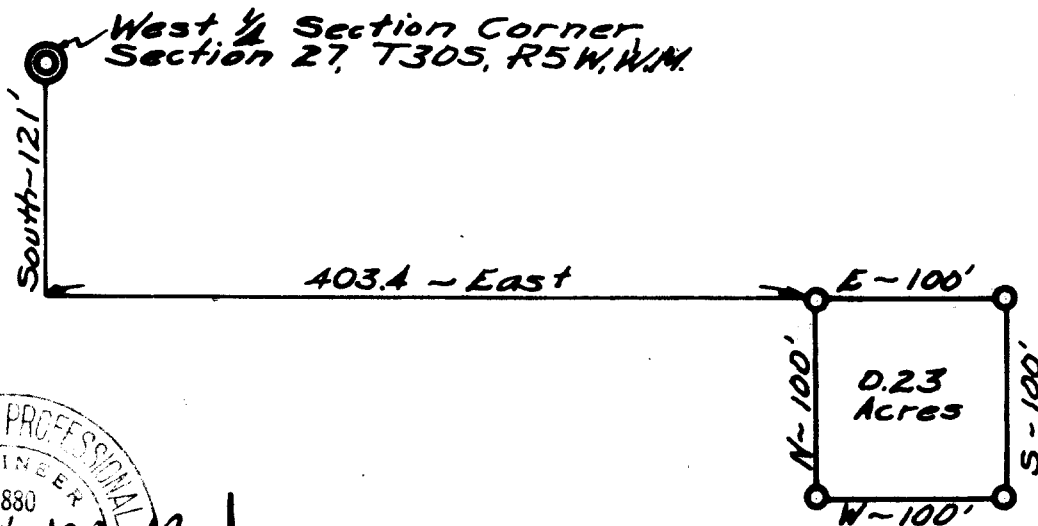
Portion of D.L.C. #51, T30S, R5W.
Scale 1"=100' Sept. 1949

**COUNTY SURVEYORS FILE DATA
DO NOT REMOVE FROM OFFICE**

FILED
RECEIVED

OCT 18 1950

COUNTY SURVEYOR
DOUGLAS COUNTY, ORE.



SW $\frac{1}{4}$ 27

C. S. File No. 51/132-10