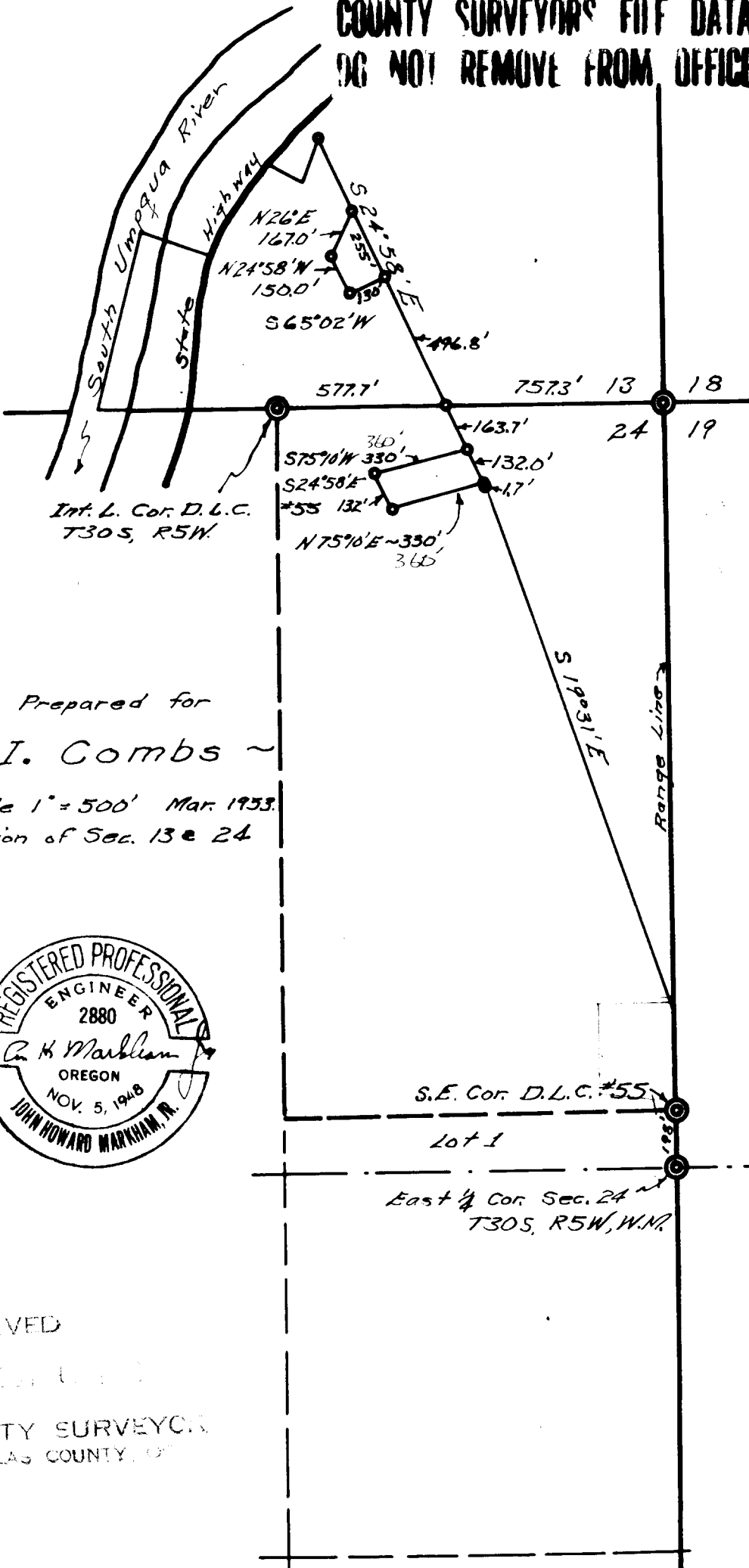


COUNTY SURVEYORS FILE DATA
DO NOT REMOVE FROM OFFICE



Prepared for

~ D. I. Combs ~

Scale 1" = 500' Mar. 1933

Portion of Sec. 13 & 24



FILED
RECEIVED

COUNTY SURVEYOR
DOUGLAS COUNTY, OREGON

SE 1/4 Sec 13
NE 1/4 Sec 24

P. C. S. File No. 51/132-9