

Prepared for

4 ea.  
mail

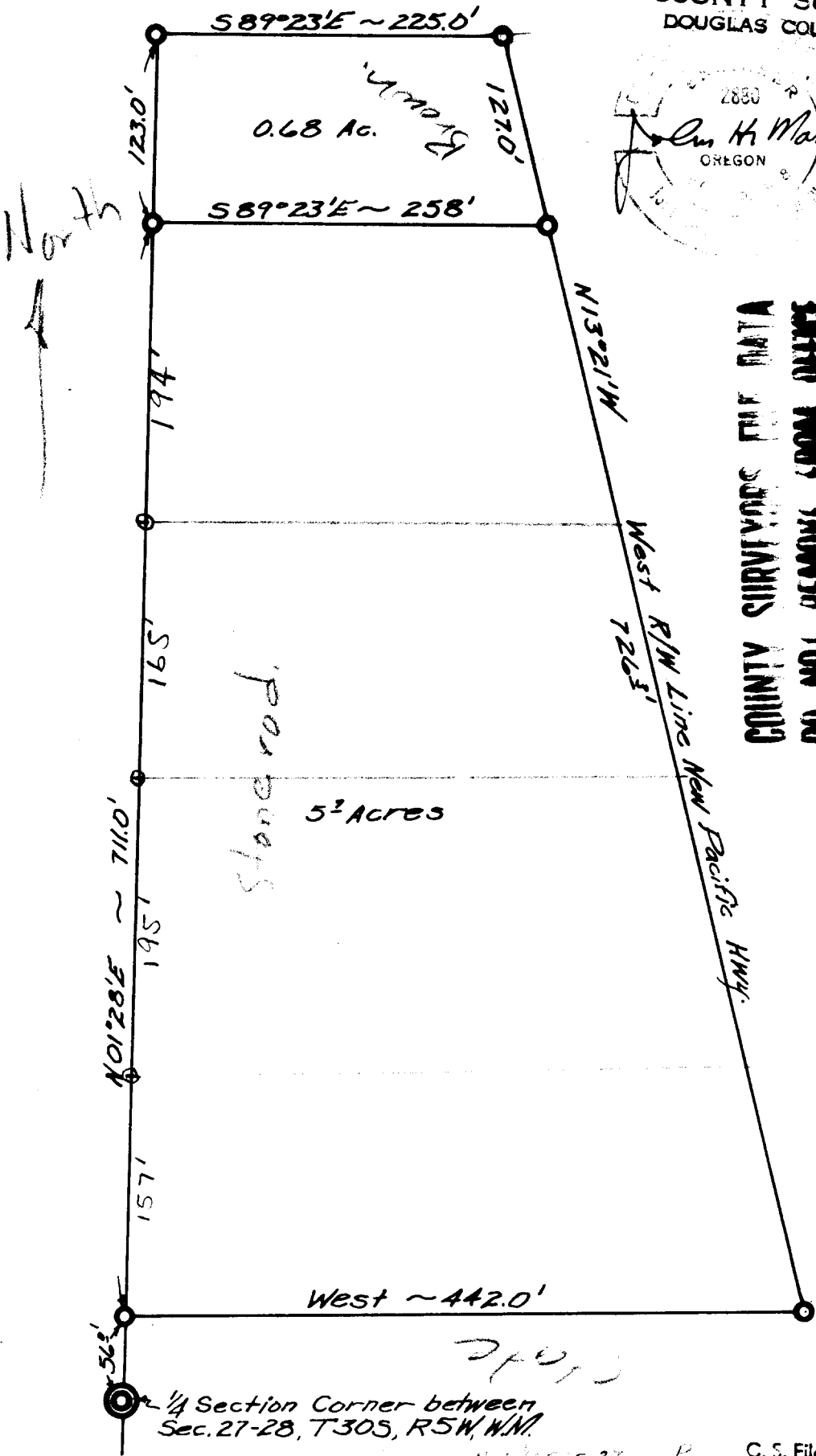
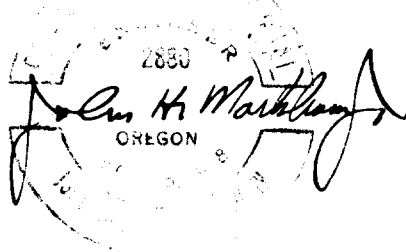
JACK RUSSELL

Scale 1"=100' Dec. 1950

FILED  
RECEIVED

OCT 12 1950

COUNTY SURVEYOR  
DOUGLAS COUNTY, ORE.



COUNTY SURVEYOR'S FIELD DATA  
DO NOT REMOVE FROM OFFICE

1/4 Section Corner between  
Sec. 27-28, T.30S, R.5W, W.1N

C. S. File No. 51/132-3