

COUNTY SURVEYORS FILE DATA
DO NOT REMOVE FROM OFFICE

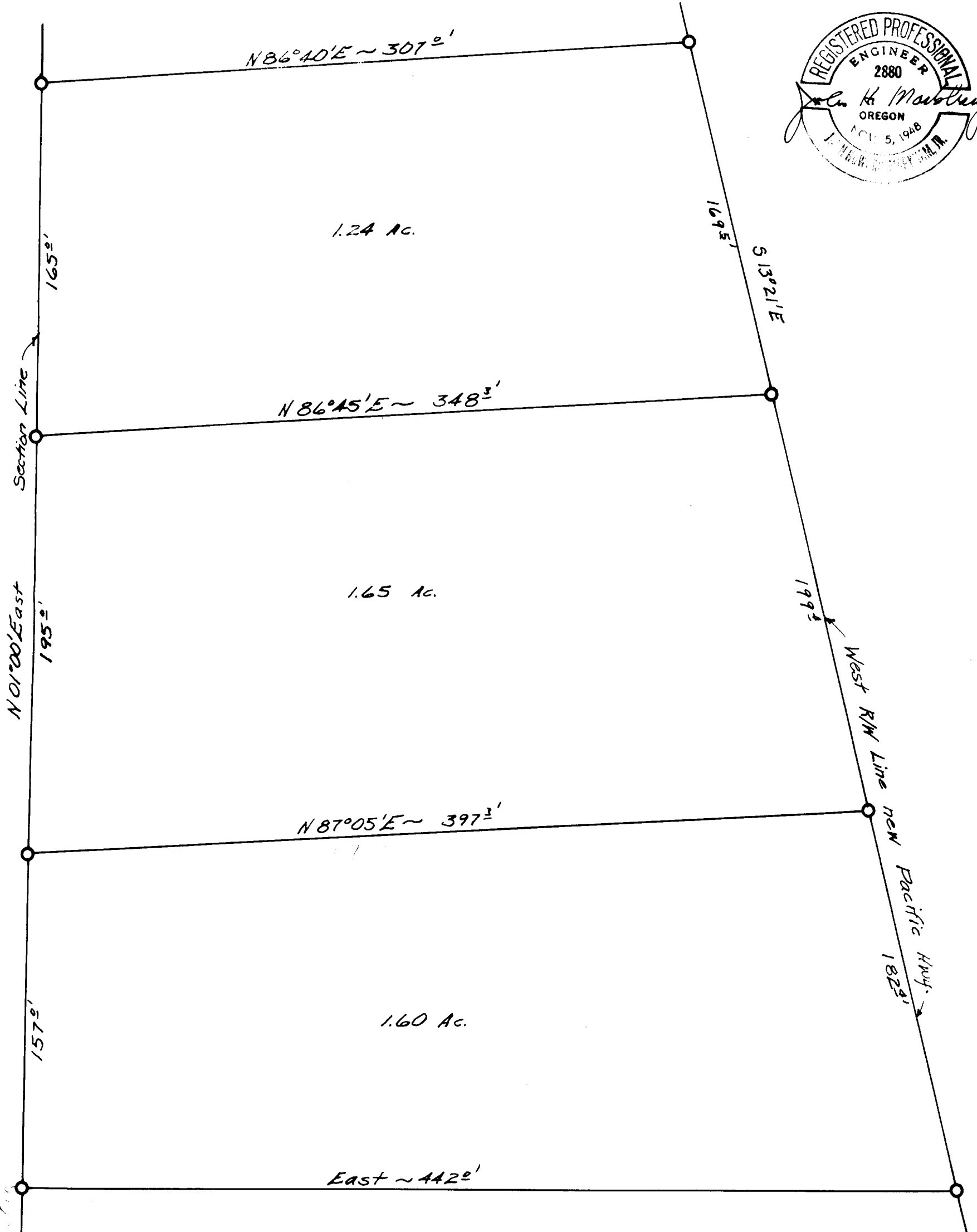
Prepared for

JACK RUSSELL

Scale 1"=50' Dec. 1950

FILED
RECEIVED

COUNTY SURVEYOR
DOUGLAS COUNTY, ORE.



Section Line

N 01°00' East

577' to D.L.C. (11)

N 86°40'E ~ 307'

1.24 Ac.

1695'

S 13°21'E

N 86°45'E ~ 348'

1.65 Ac.

165'

195'

199'

West R/W Line new Pacific Hwy.

N 87°05'E ~ 397'

1.60 Ac.

157'

182'

East ~ 442'

1/4 Section Corner between
Sec. 27-28, T30S, R5W, W.M.

NW 1/4 Sec 27

P. 51/13276 17°30'