

Prepared for

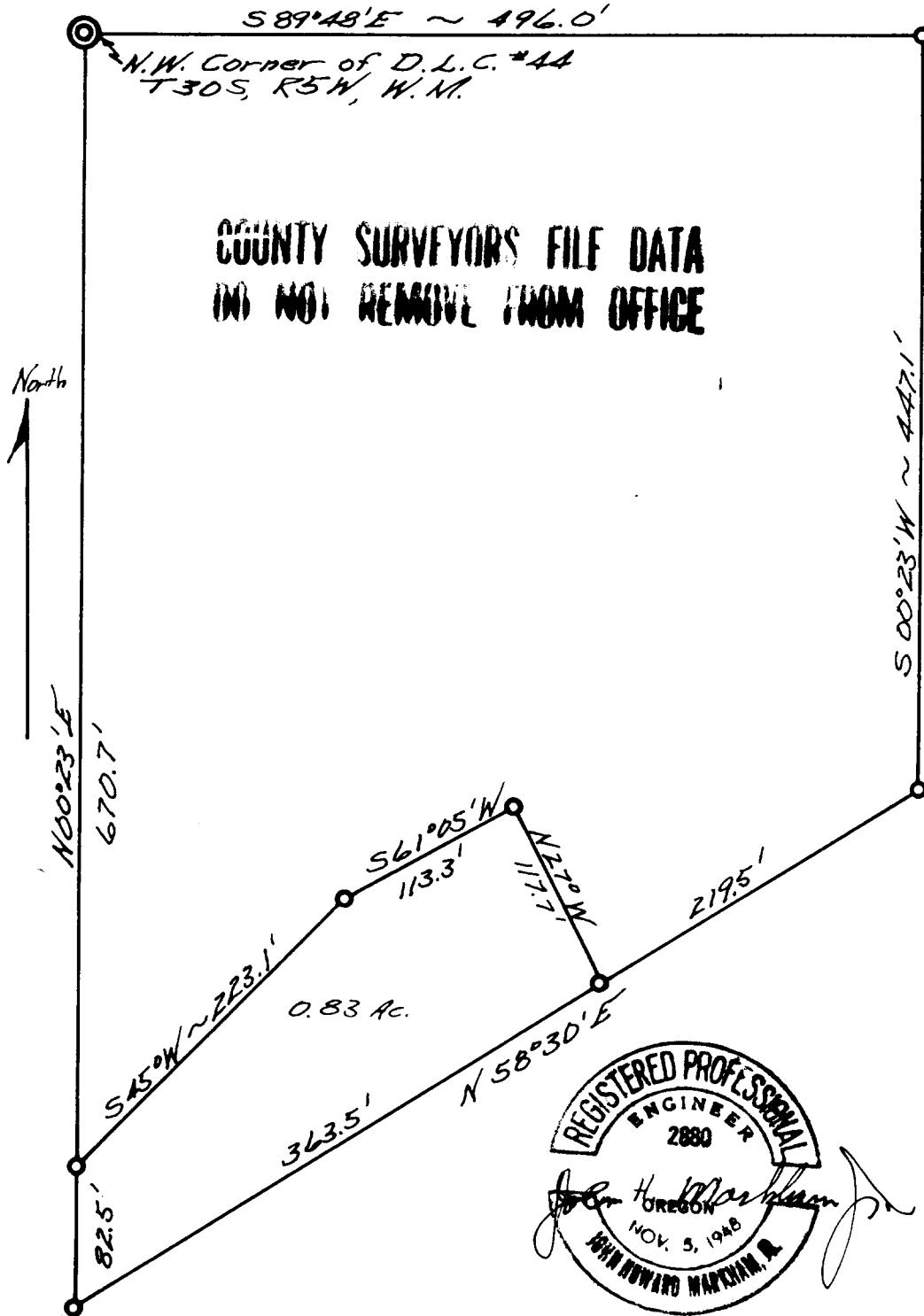
FILED

W. C. THRALL RECEIVED

Scale 1" = 100' Jan. 1952.

JAN 24 1952

Portion of D.L.C. #44, T30S, R5W, W.M. COUNTY SURVEYOR DOUGLAS COUNTY, ORE.



NW 1/4 S. 20

P. C. S. file No. 51/1325