

N.E. Cor. Wm Preston
D.L.C. #62, T30S, R5W.

**COUNTY SURVEYORS FILE DATA
DO NOT REMOVE FROM OFFICE**

FILED
RECEIVED

3

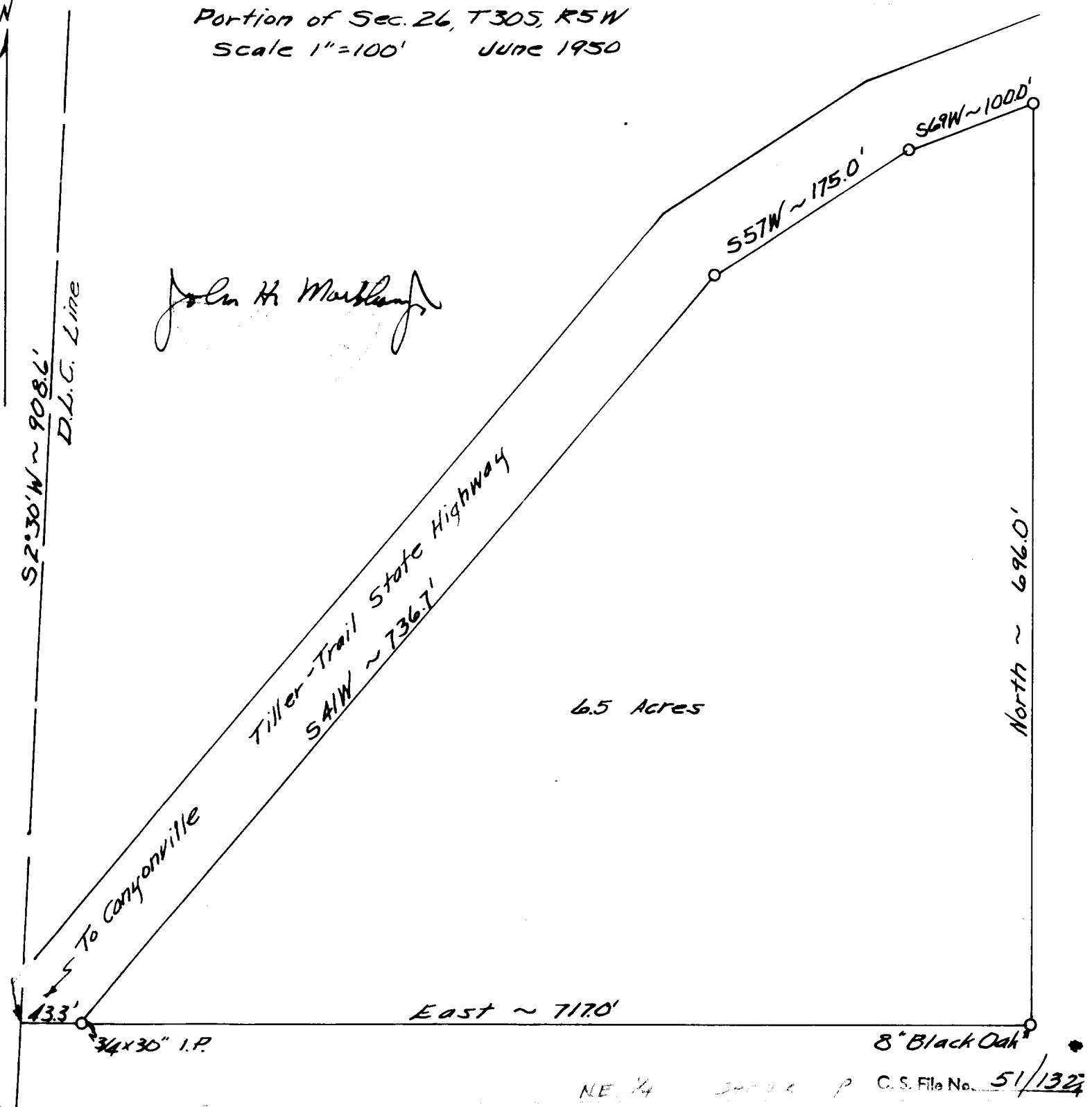
Prepared for

NORVAL RICE

COUNTY SURVEYOR
DOUGLAS COUNTY, MO.

Portion of Sec. 26, T30S, R5W
Scale 1"=100' June 1950

John H. Markham



Tiller-Trail State Highway
S41W ~ 736.7'

6.5 Acres

S57W ~ 175.0'
S69W ~ 1000.0'

North ~ 696.0'

43.3'
3/4 x 30" I.P.

8" Black Oak

NE 1/4 Sec 26 P C.S. File No. 51/1324