

COUNTY SURVEYORS FILE DATA  
DO NOT REMOVE FROM OFFICE

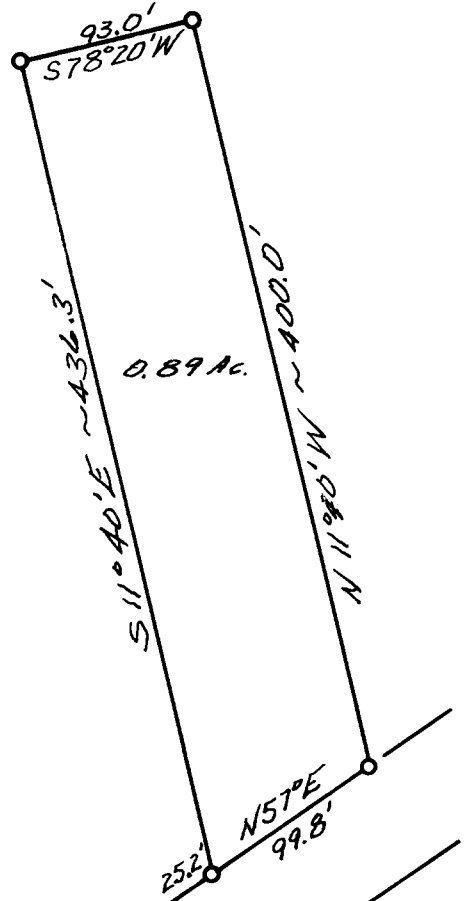
N.E. Corner of Preston  
D.L.C. #62, T305, R5W, W.N.



S 2° 30' W ~ 812.1'

FILED  
RECEIVED

COUNTY SURVEYOR  
DOUGLAS COUNTY, OREGON



N 41° E ~ 668.5'  
To Canyonville State Hwy.

Prepared for

~ Mrs. JOHN FENN ~

Scale 1"=100' Sept. 1953.



10/26/53 No. 51/132-3