

COUNTY SURVEYORS FILE DATA
DO NOT REMOVE FROM OFFICE

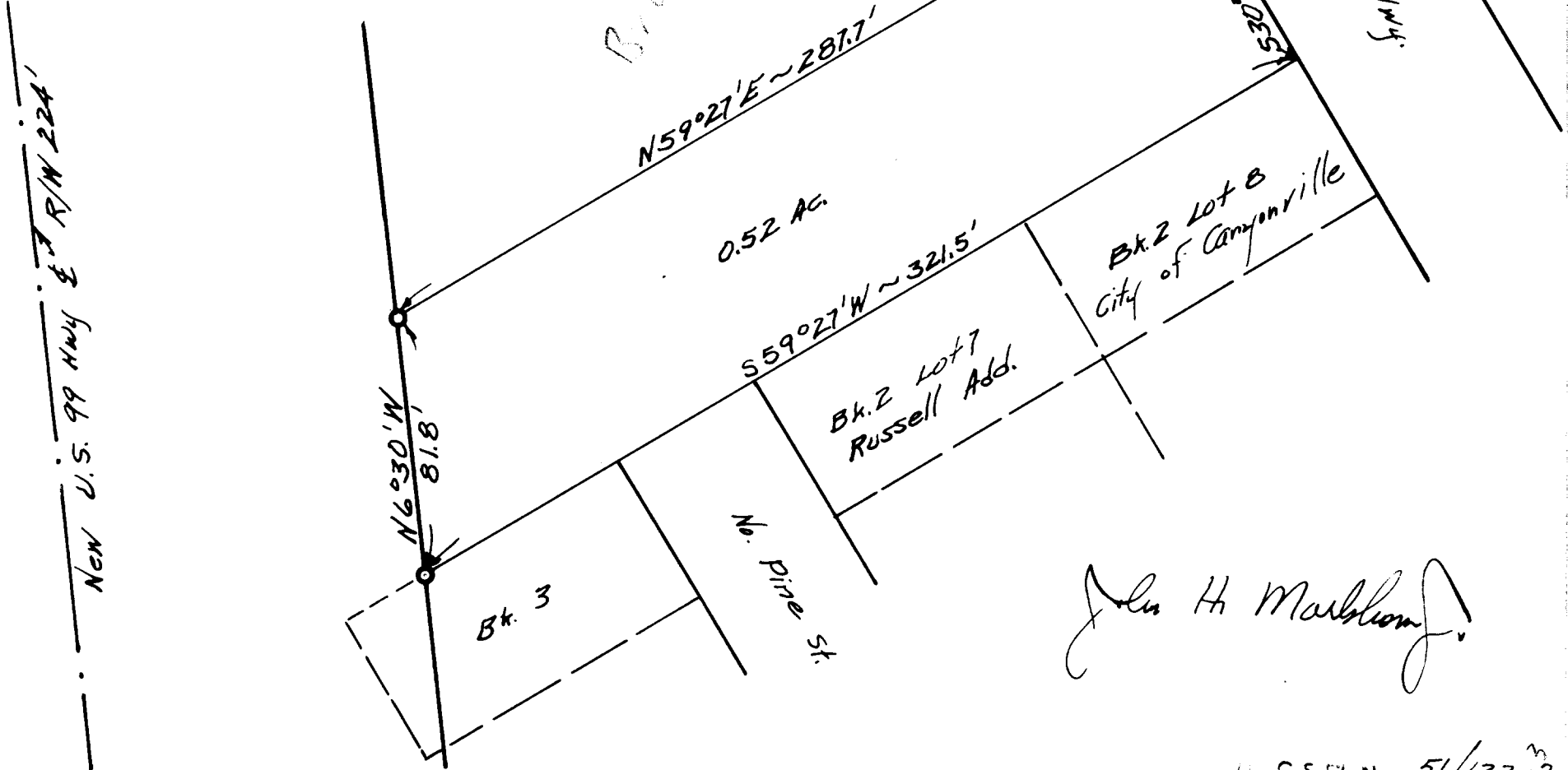
FILED
RECEIVED

Prepared for

JACK RUSSELL

COUNTY SURVEYOR
DOUGLAS COUNTY, OR.

Portion of Clark D.L.C. #51 T30S, R5W
Scale " = 50' Aug. 1950 SW NW 1/4 S 27



John H. Marshall Jr.