

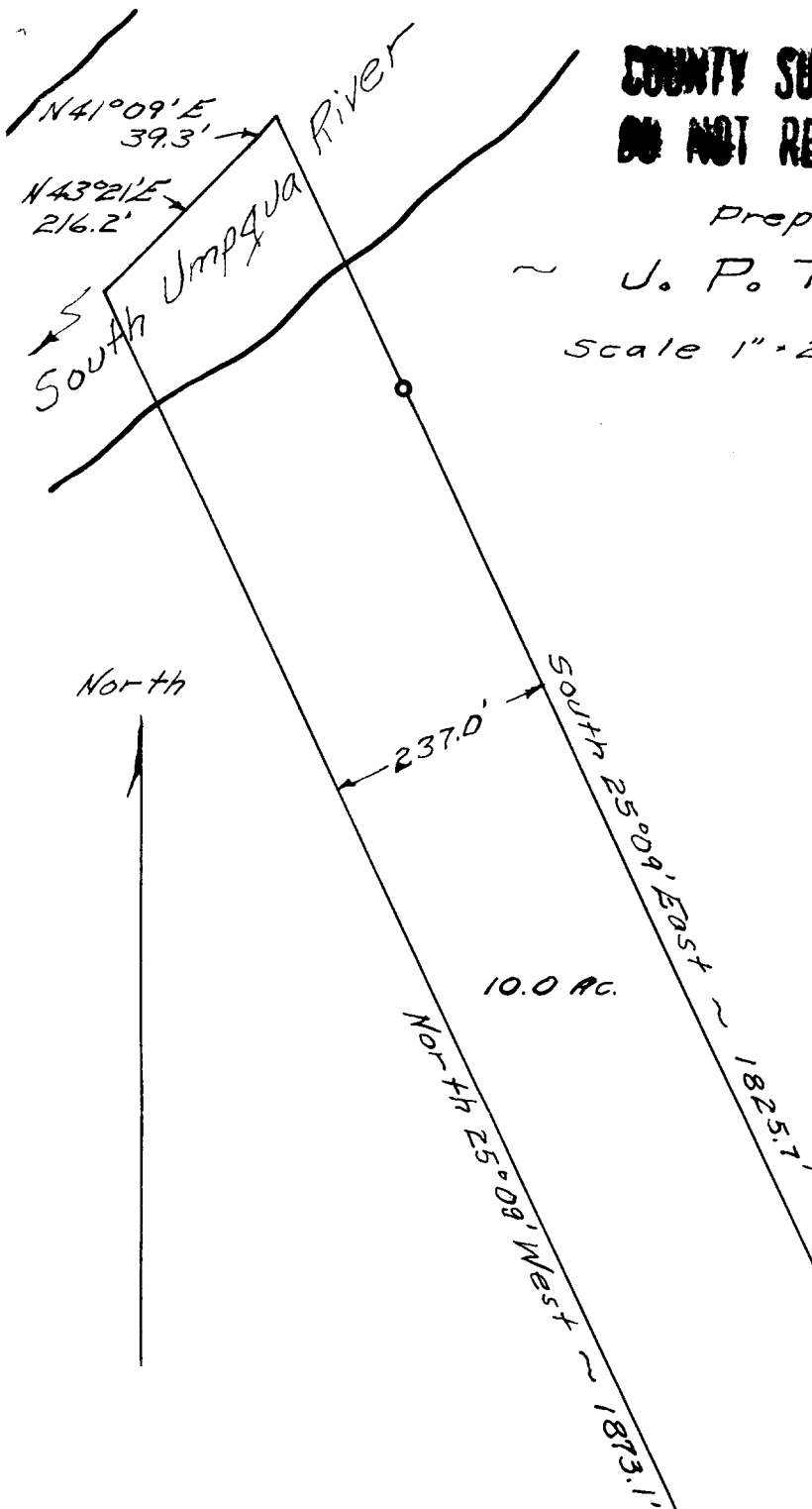
COUNTY SURVEYORS FILE DATA
DO NOT REMOVE FROM OFFICE

FILED
 RECEIVED

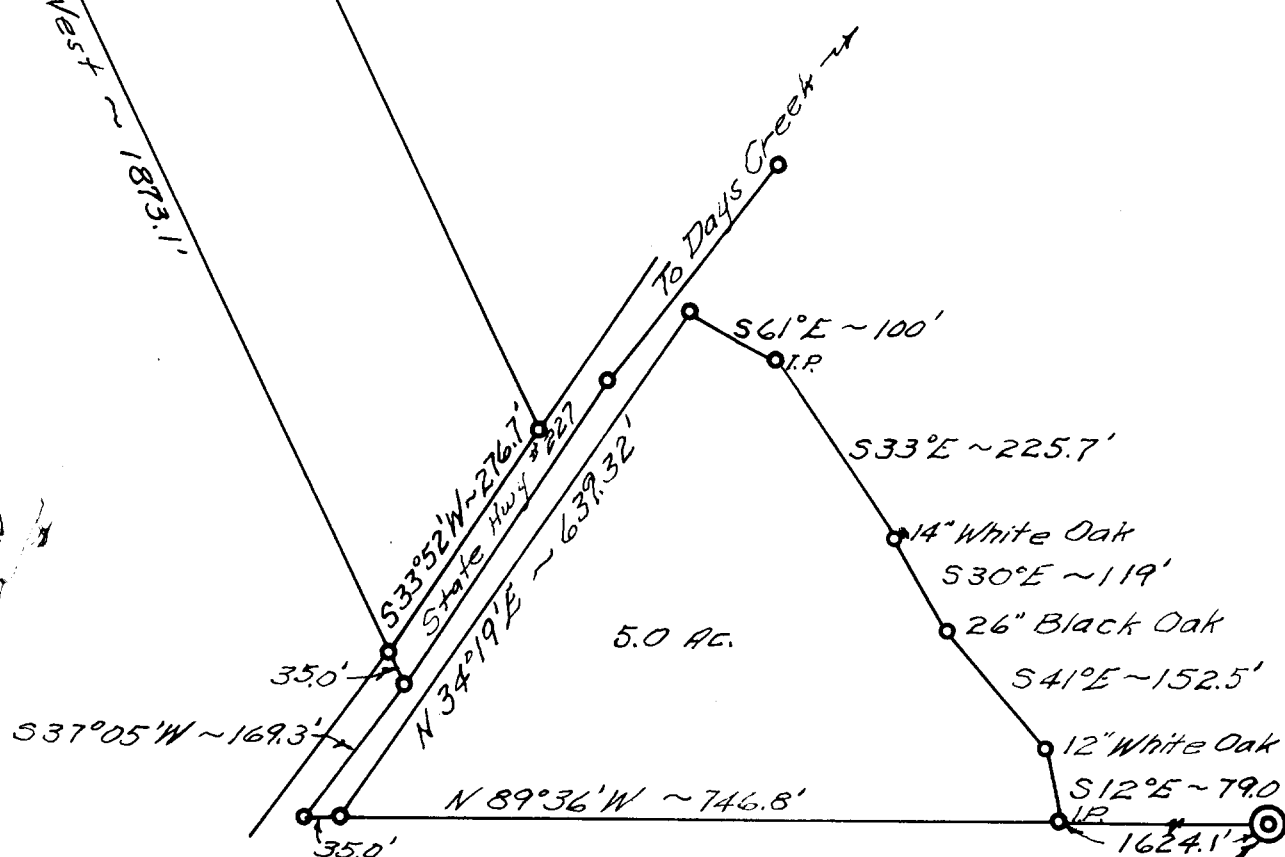
Prepared for
 ~ J. P. TALBOTT ~

Scale 1" = 200' Sept. 1955

COUNTY SURVEYORS
 BOULDER COUNTY



10.0 AC.



5.0 AC.

- 14" White Oak
- 26" Black Oak
- 12" White Oak

1/4 Cor. 24-25
 T30S, R5W, W.1/4