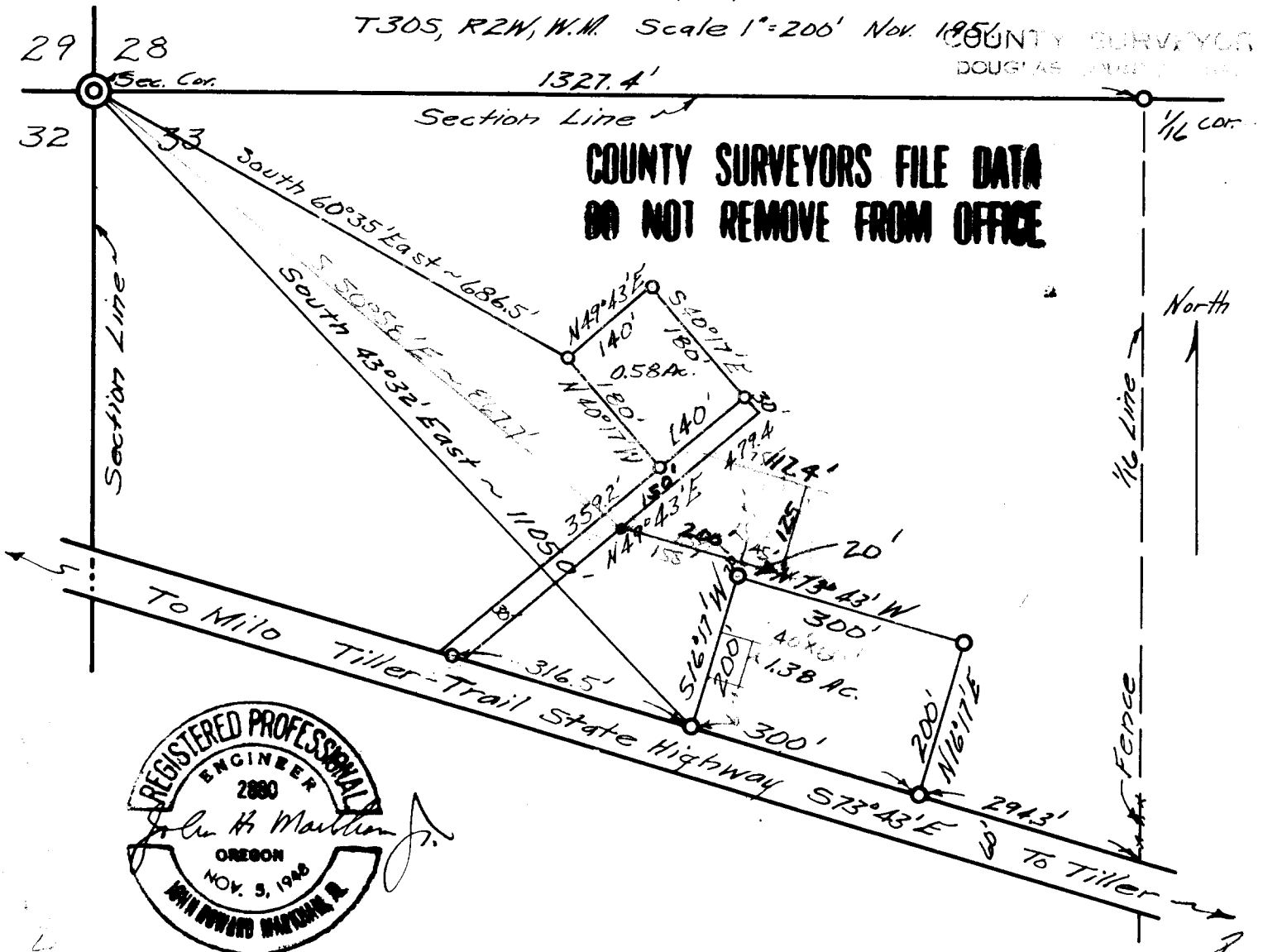


~ Prepared for ~ FILED
~ D. W. CLARK ~ RECEIVED

Portion of NN $\frac{1}{4}$ NW $\frac{1}{4}$ of Sec. 33.

T30S, R2W, W.M. Scale 1"=200' Nov. 1950 COUNTY SURVEYORS
DOUGLAS COUNTY, OREGON



**COUNTY SURVEYORS FILE DATA
DO NOT REMOVE FROM OFFICE**



51/131-6