



FILES
RECEIVED

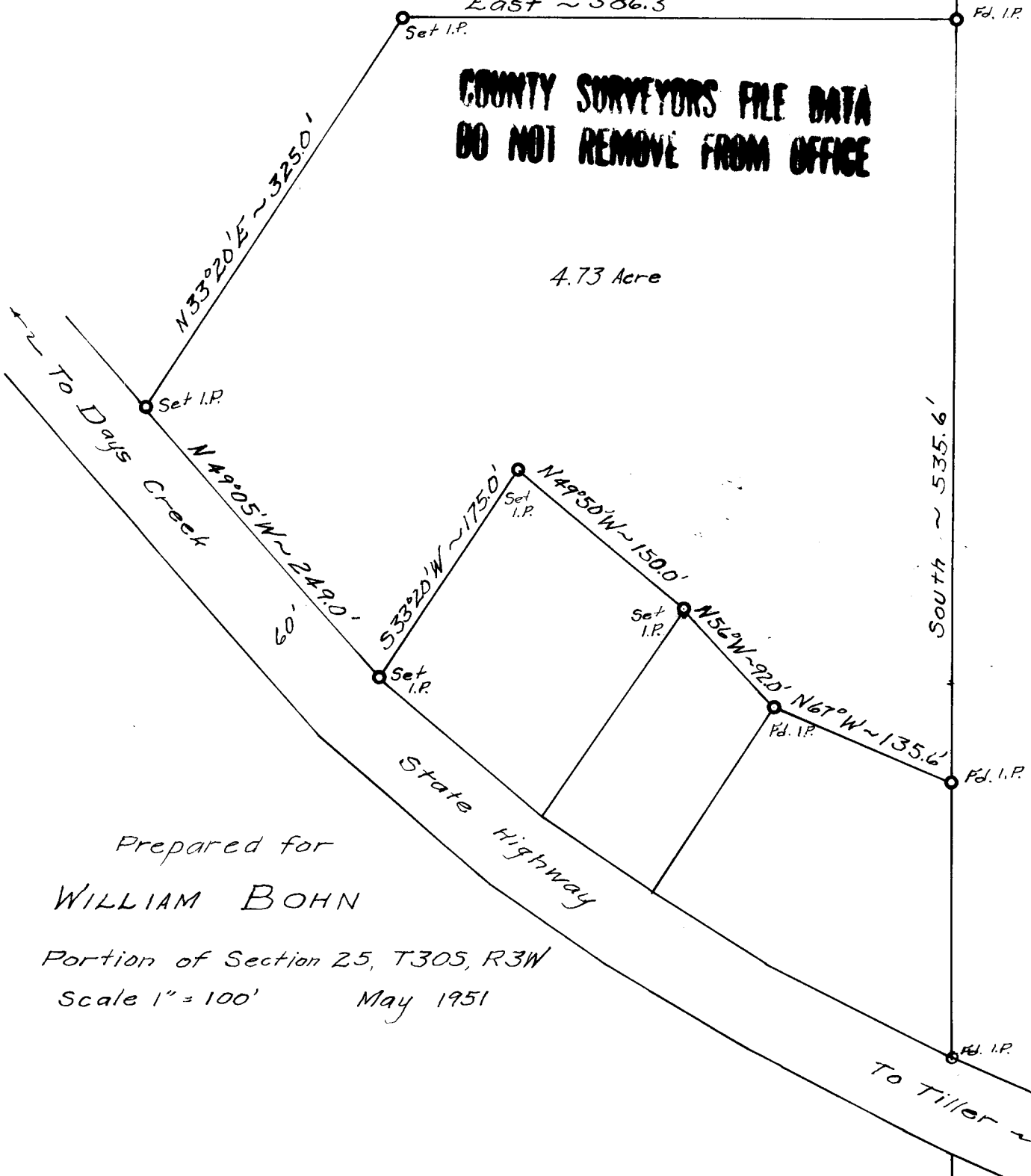
COUNTY SURVEYOR
DOWNEY COUNTY

24
25
North ~ 1297.3'
Fd. I.P.

East ~ 386.3'

**COUNTY SURVEYORS FILE DATA
DO NOT REMOVE FROM OFFICE**

4.73 Acre



Prepared for
WILLIAM BOHN

Portion of Section 25, T30S, R3W
Scale 1" = 100' May 1951

To Tiller →

C.S. File No. 51/3L-5