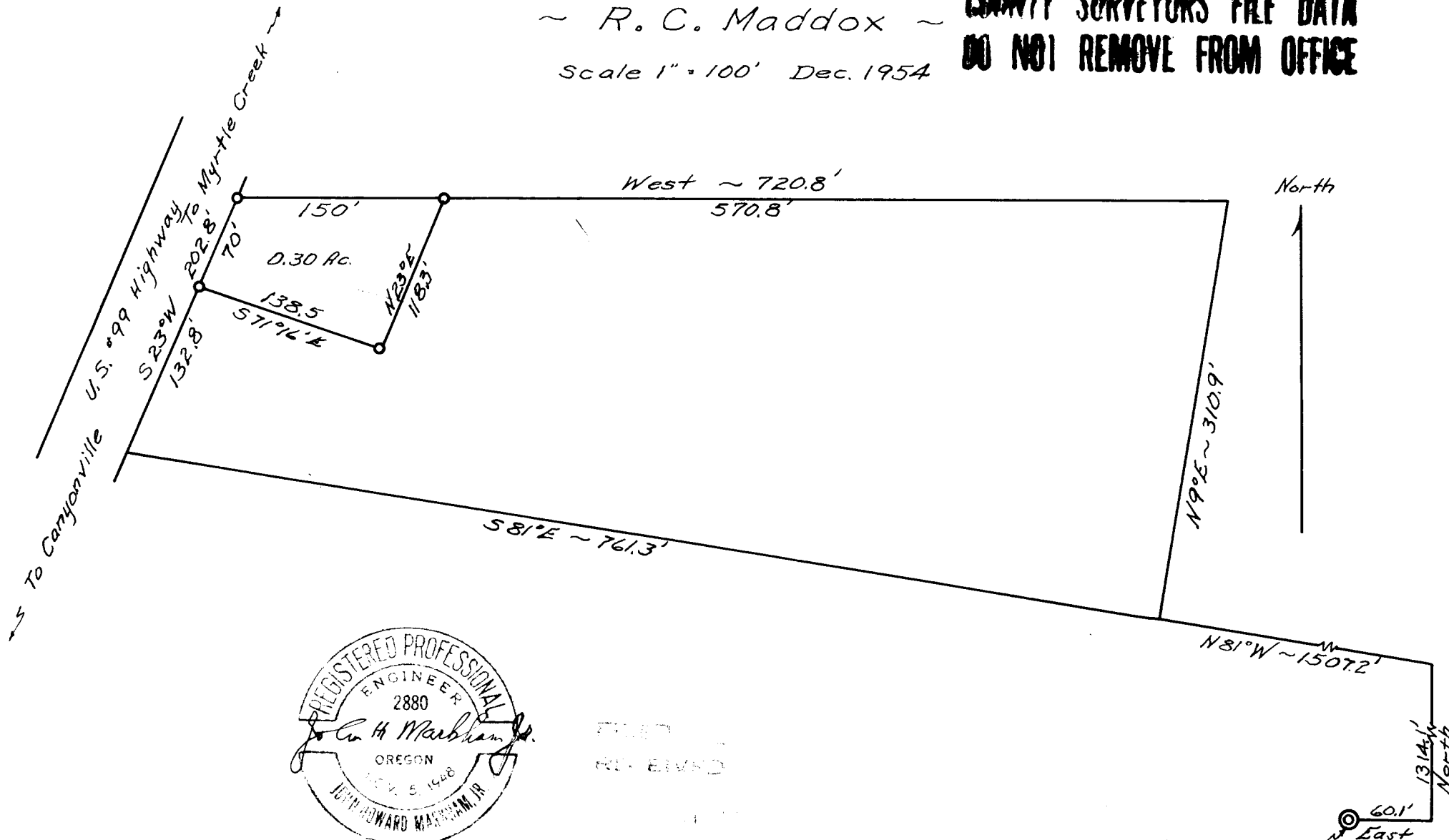


Prepared for  
 ~ R. C. Maddox ~  
 Scale 1" = 100' Dec. 1954

**COUNTY SURVEYORS FILE DATA  
 DO NOT REMOVE FROM OFFICE**



To Canyonville  
 U.S. #99 Highway  
 S 23°W 132.8'  
 To Myrtle Creek  
 202.8'



FILED  
 RECEIVED

COUNTY SURVEYOR  
 DOUGLAS COUNTY

1/4 Section Corner 33-34  
 T29S, R5W W.M.