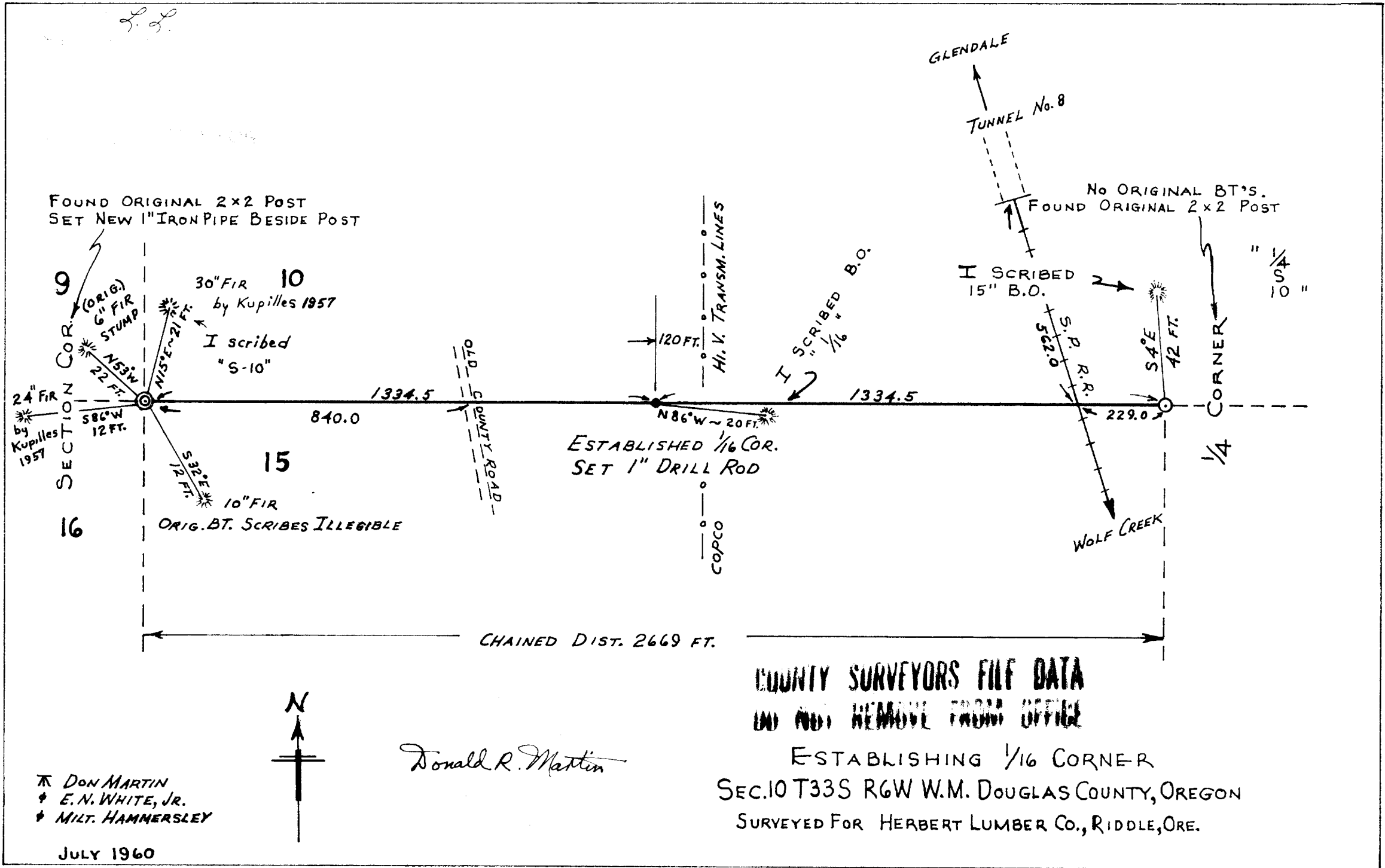


L.L.



✕ DON MARTIN
 ✕ E. N. WHITE, JR.
 ✕ MILT. HAMMERSLEY



Donald R. Martin

COUNTY SURVEYORS FILE DATA
DO NOT REMOVE FROM OFFICE
 ESTABLISHING 1/16 CORNER
 SEC. 10 T33S R6W W.M. DOUGLAS COUNTY, OREGON
 SURVEYED FOR HERBERT LUMBER CO., RIDGLE, ORE.

JULY 1960