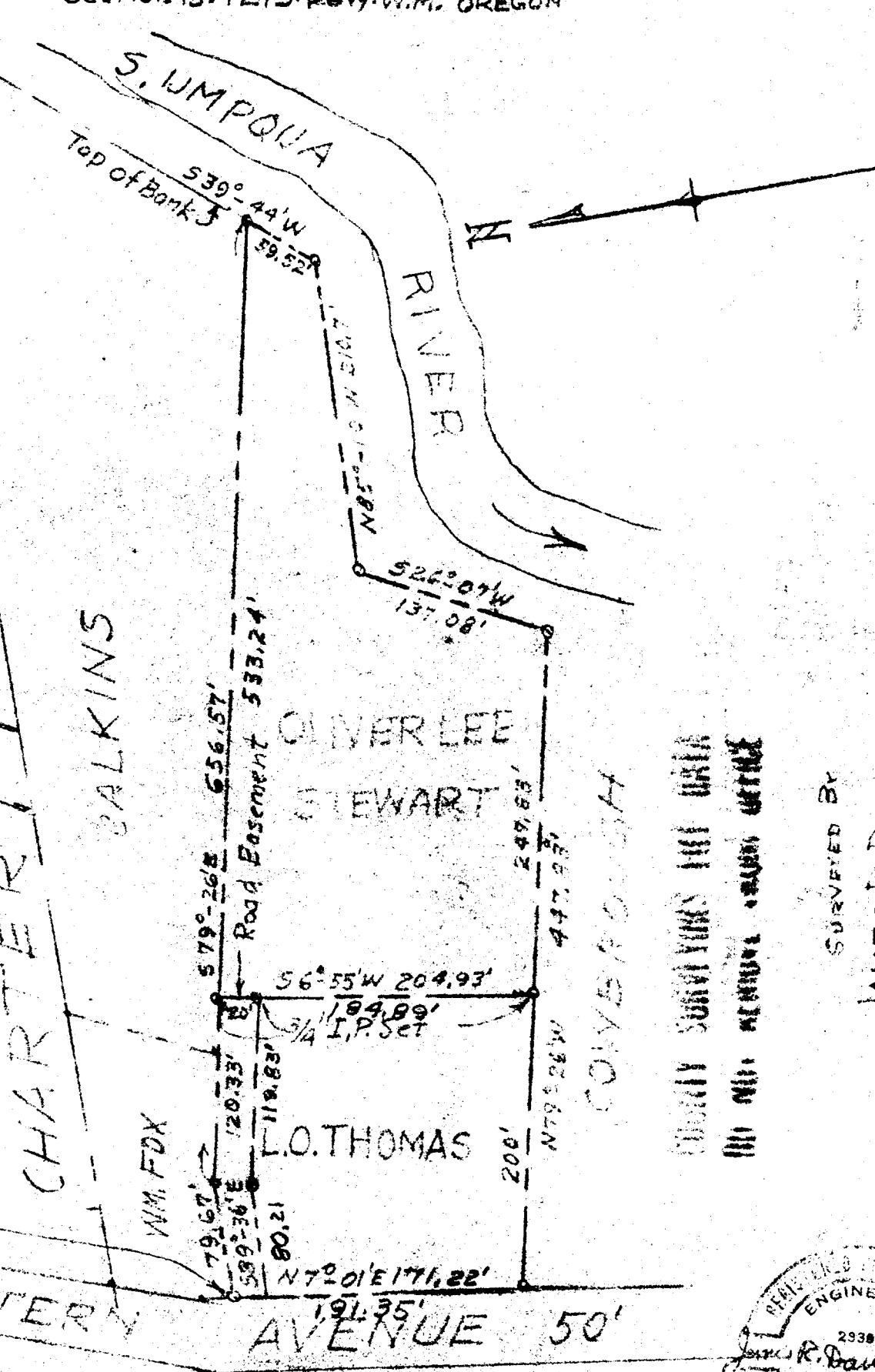


L.O. THOMAS PARCEL SOUTH OF CHARTER OAKS - DOUGLAS COUNTY  
SECTION 15, T27S, R6W, W.M., OREGON

Point of Beginning  
East 3370.8', South 71.4', S31°10'W 96.8',  
S43°18'W 226.2', S12°05'W 419.5', S13°19'W 50.8',  
S18°55'W 232.3' & S72°01'W 19.08' from  
West 1/4 Cor. Section 15, T27S, R6W of W.M.



SCALE 1"=100'  
Rev. July 27, 60  
JUNE 29, 1960.

SURVEYED BY  
JAMES R. DAUGHERTY  
CIVIL-SANITARY ENGINEER  
WINSTON-ORE.

