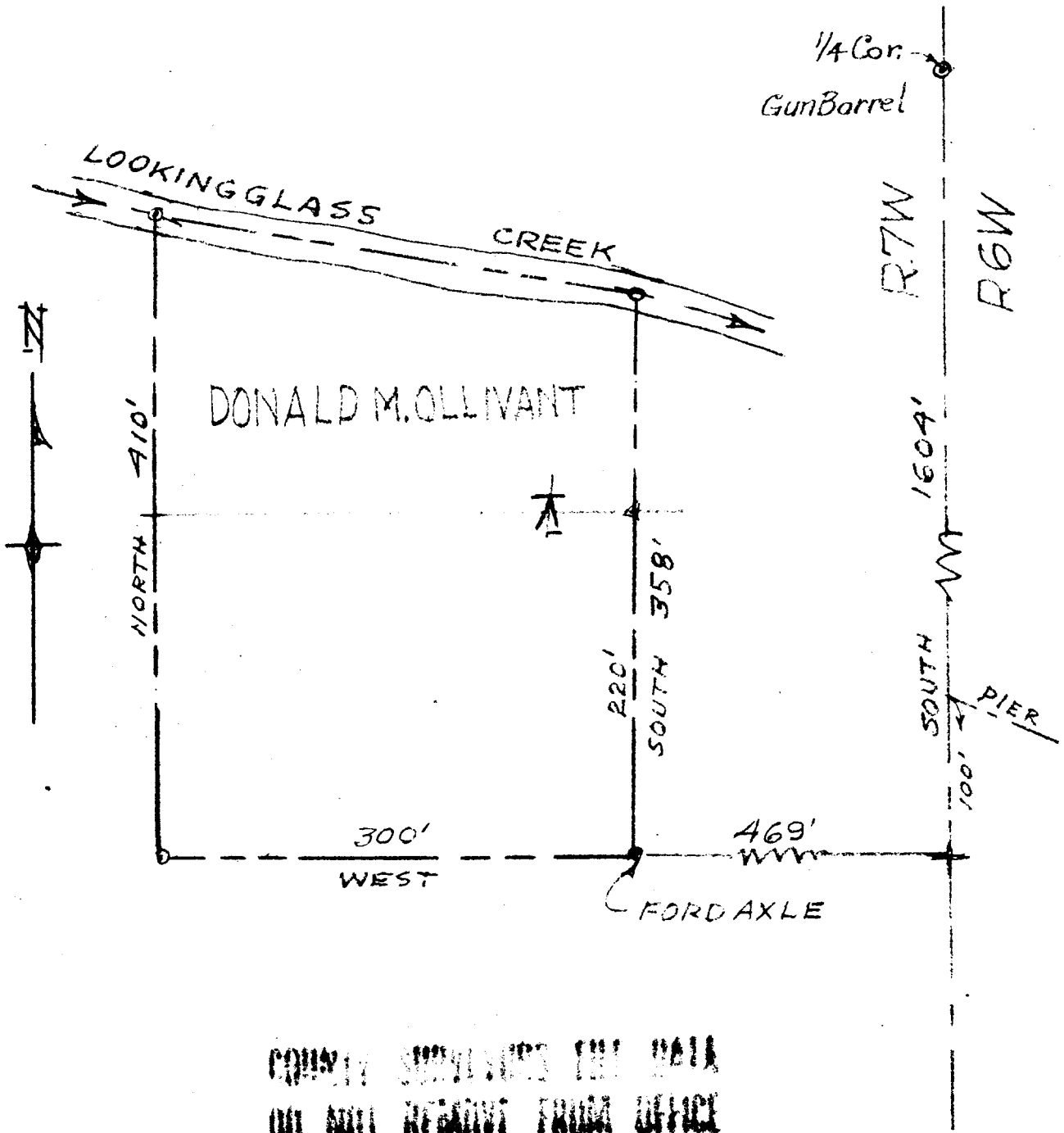


DONALD M. OLLIVANT PARCEL • SECTION 12 • T28S • R7W • W.M.
DOUGLAS COUNTY • OREGON



COUNTY SURVEYORS THE DATA
DO NOT REMOVE FROM OFFICE

SURVEYED BY
JAMES R. DAUGHERTY
CIVIL-SANITARY ENGR.
WINSTON-ORE.

SCALE 1"=100'

JUNE 9, 1960.

