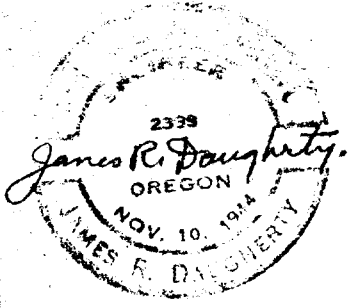
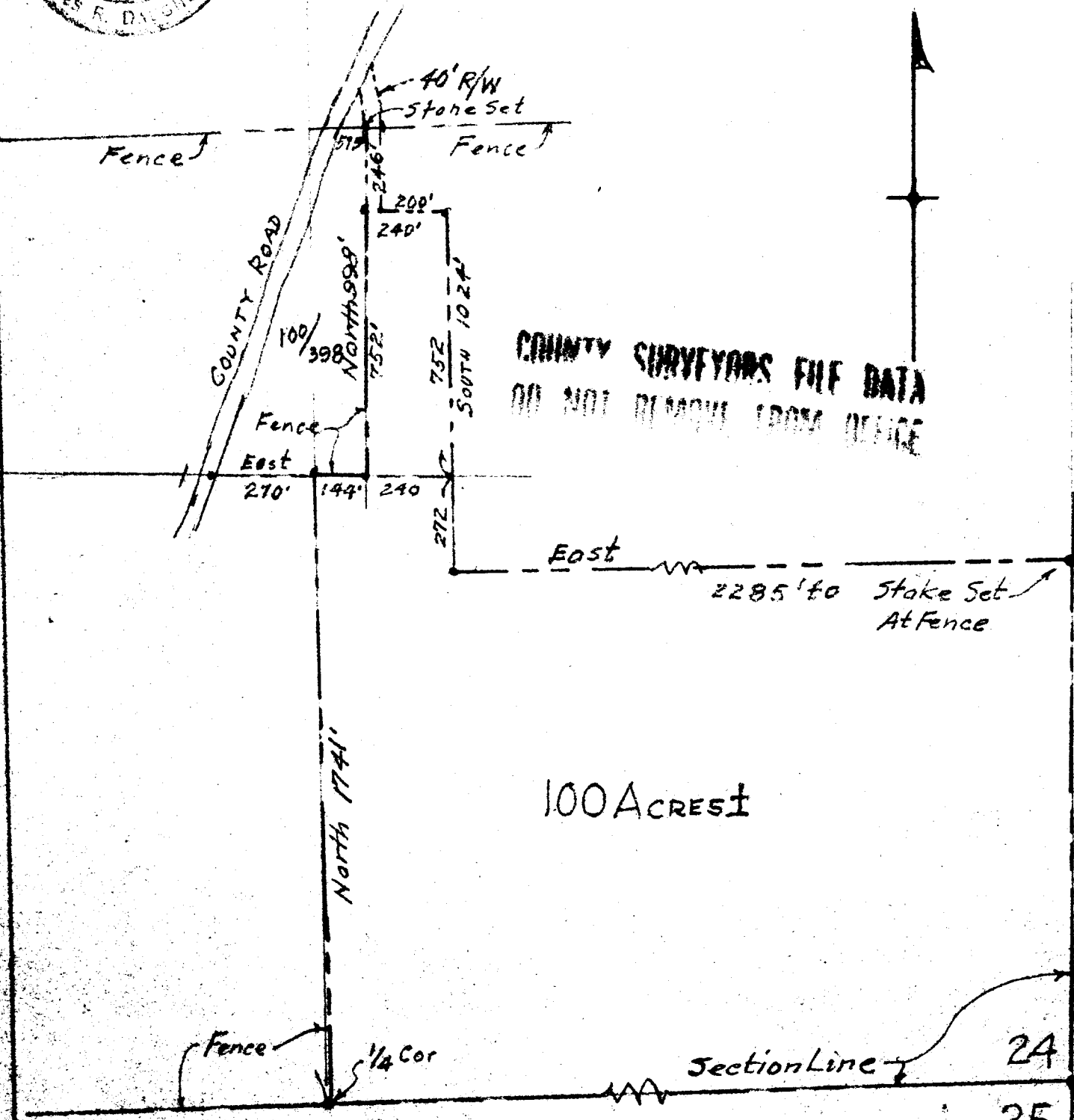


M.V. MARQUISS PARCEL IN SECTION 24-T275-R7W-W.M. DOUGLAS COUNTY, ORE.



SURVEYED BY
JAMES R. DAUGHERTY
 CIVIL-SANITARY ENGINEER
 WINSTON, ORE.

SCALE 1" = 400'



COUNTY SURVEYORS FILE DATA
 DO NOT REMOVE FROM OFFICE

100 ACRES ±

| | |
|----|----|
| 24 | 19 |
| 25 | 30 |

JUNE 7, 1960