

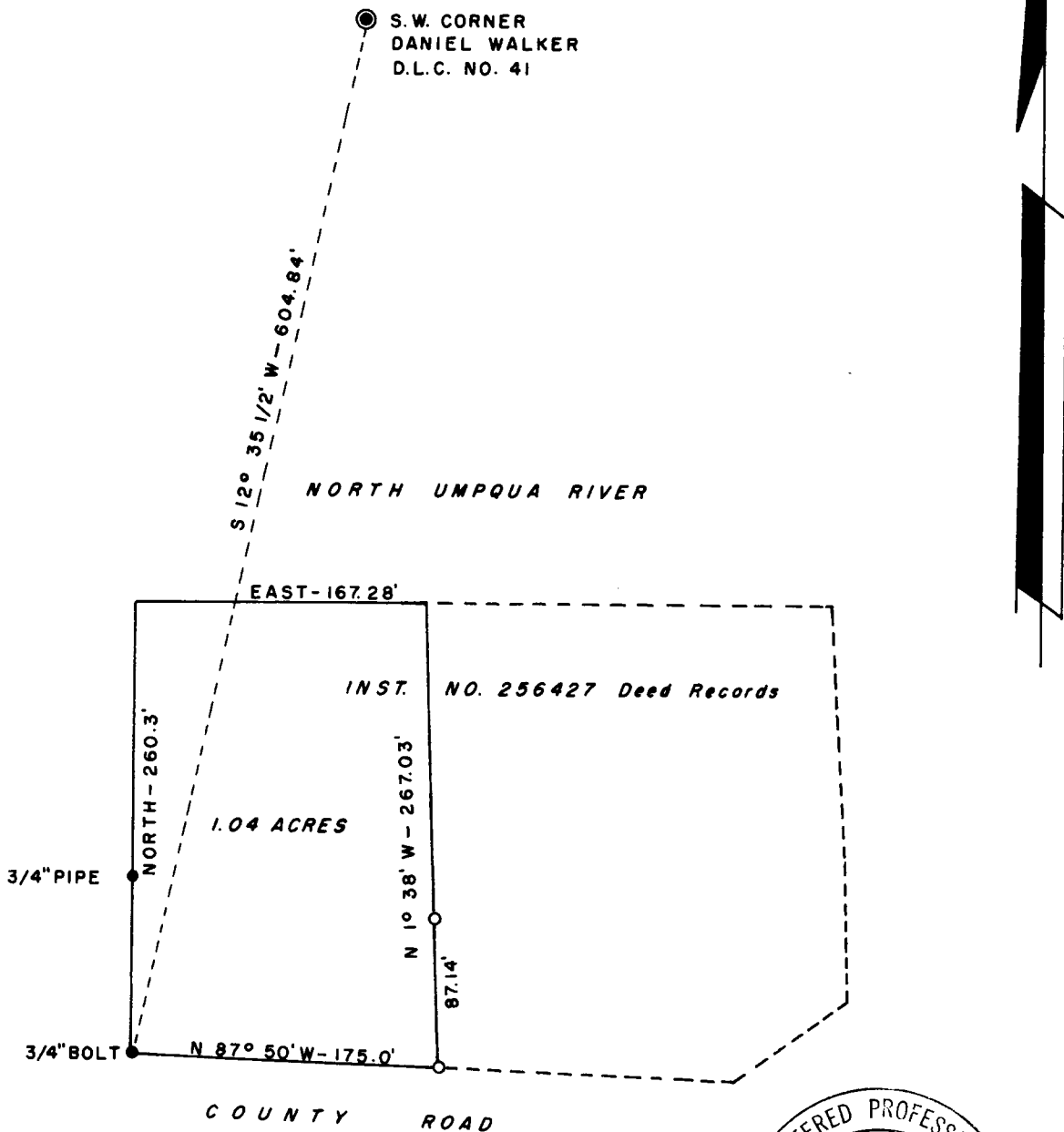
COUNTY SURVEYORS FILE DATA
DO NOT REMOVE FROM OFFICE

SURVEY FOR DEED DESCRIPTION
IN LOT 2, SEC. 17, T 26 S, R 3 W, W.M.

SURVEYED FOR: LEO WYNDEARO
SURVEYED BY: G. R. LECKLIDER - ENG'R.

JULY, 1960
SCALE: 1" = 100'

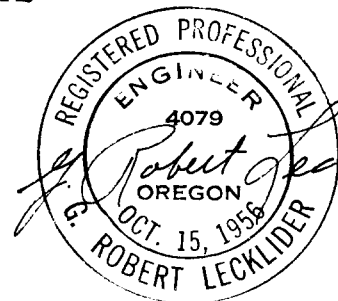
● DENOTES CORNER MONUMENTS FOUND
○ DENOTES "T" BAR WITH SURVEY CAP SET



FILED
RECEIVED

JUL 11 1960

COUNTY SURVEYOR
DOUGLAS COUNTY, ORE.



C. S. File No. 51/107