

101/1550

COUNTY SURVEYORS FILE DATA
DO NOT REMOVE FROM OFFICE

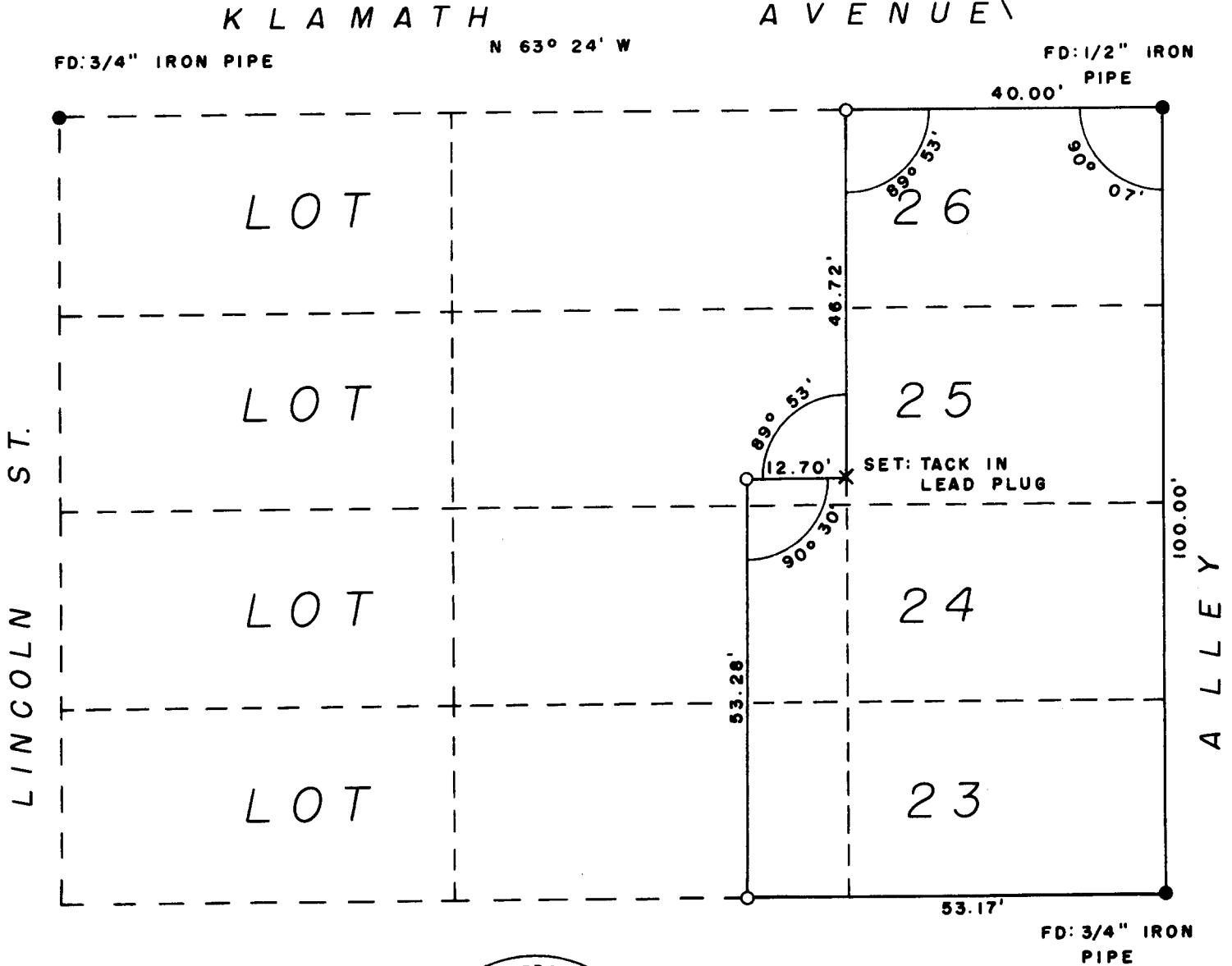
SURVEY TO SET PROPERTY CORNERS
IN LOTS 23, 24, 25, & 26, BLOCK 75,
SUBDIVISION "A", KINNEYS IMPROVED PLAT
ROSEBURG, DOUGLAS COUNTY, OREGON

SURVEYED FOR: RUTH HAMMERSLEY
SURVEYED BY: G. R. LECKLIDER - ENGINEER

MAY, 1960
SCALE: 1" = 20'

O DENOTES STEEL TUBE WITH SURVEY CAP SET

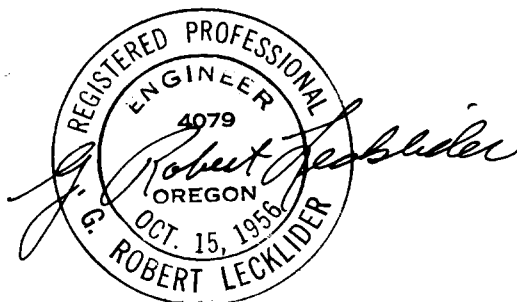
NOTE: CONTROL BASED ON C. S. FILE 38-68



FILED
RECEIVED

JUN 8 1960

COUNTY SURVEYOR
DOUGLAS COUNTY, ORE.



T 27-5-18

54/891