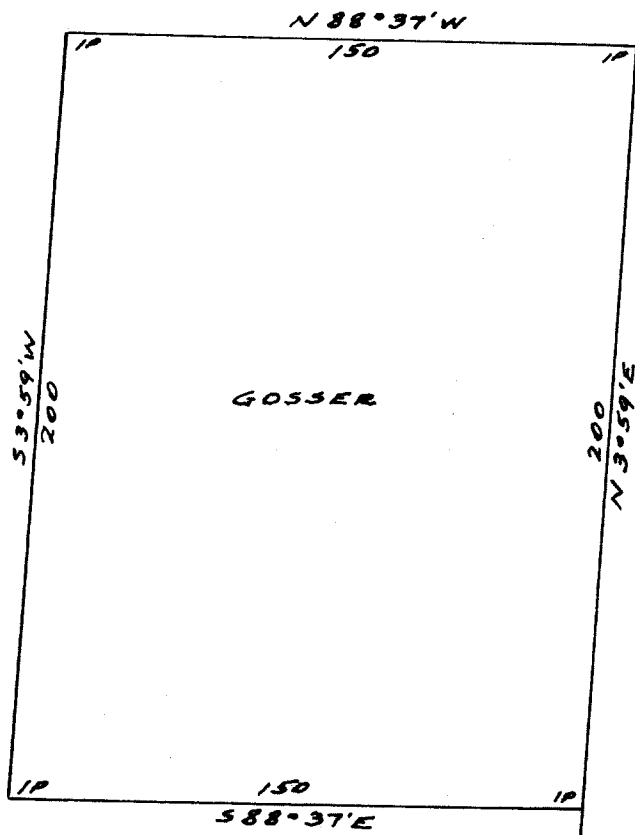
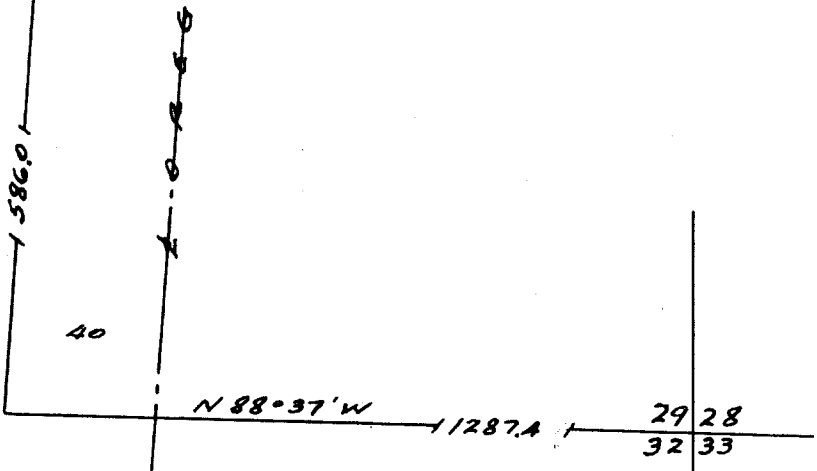


R. 12 W.



T.
20
S.



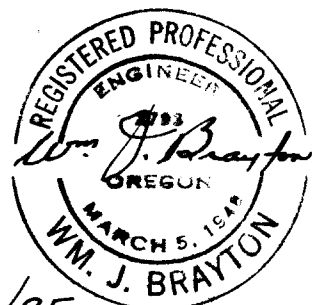
**COUNTY SURVEYORS FILE DATA
DO NOT REMOVE FROM OFFICE**

GOSSER SURVEY
SEC. 29- T.20S. R.12W. W.M.
DOUGLAS COUNTY
Scale 1" = 50' April 1960.

FILED
RECEIVED

MAY 2 1960

COUNTY SURVEYOR
DOUGLAS COUNTY, ORE.



P. C. S. File No. 51/95