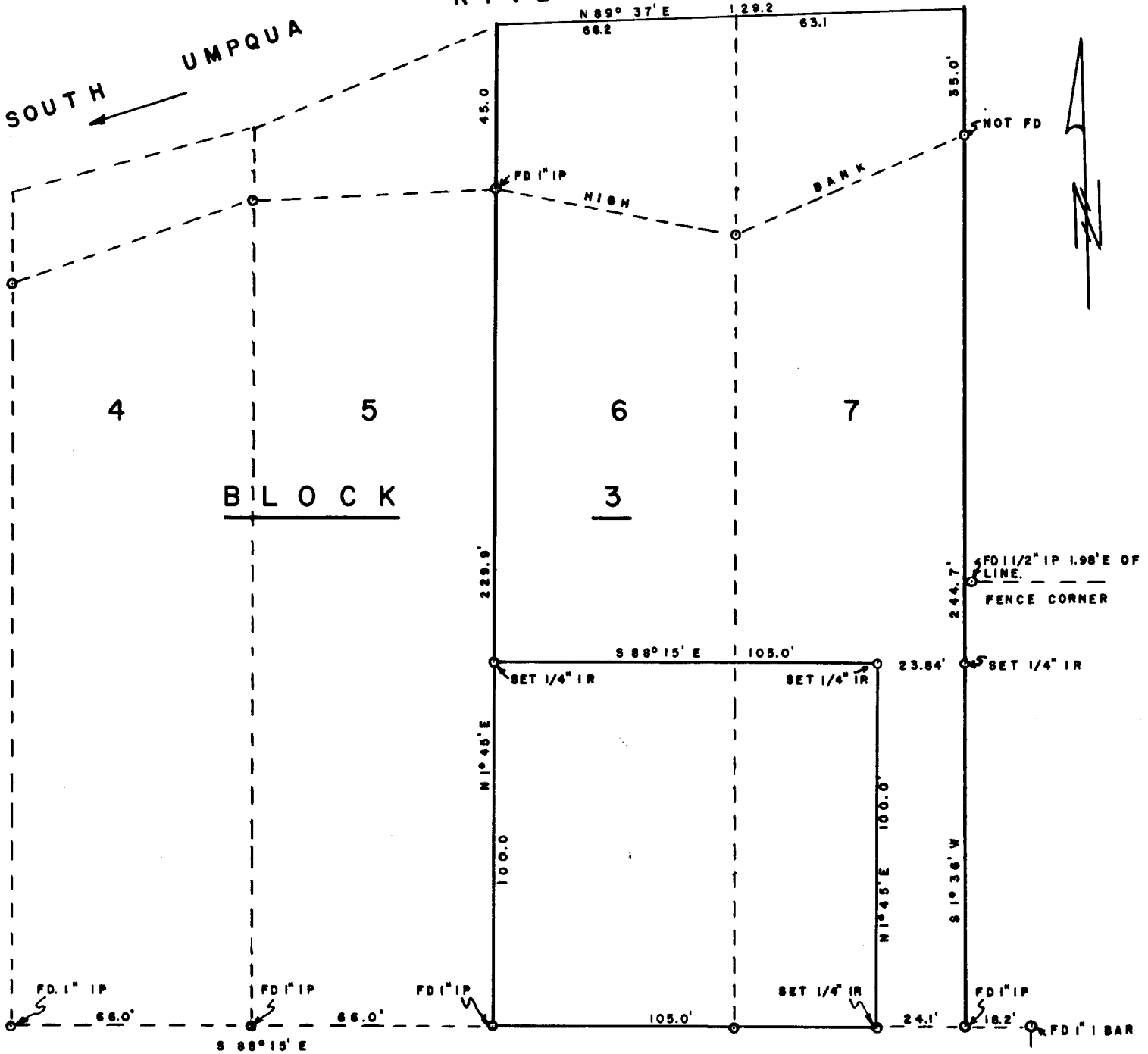
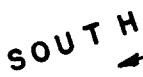


R I V E R

SOUTH UMPQUA



B L O C K

4

5

6

7

3

W. N E I L L A V E.

COUNTY SURVEYORS FILE DATA
DO NOT REMOVE FROM OFFICE

W. ELIZABETH ST.

W MAPLE ST.

FILED RECEIVED

APR 19 1960

COUNTY SURVEYOR
DOUGLAS COUNTY, ORE.

FOR IVAN P. EDWARDS



SUBDIVISION OF LOTS 6 & 7
BLOCK 3 WHARTON ACRES
ROSEBURG, OREGON

SURVEY BY K.A. MENG APRIL 16, 1960
DRAWN BY K.A. MENG 1" = 40'

P
e.s. 5/1/91