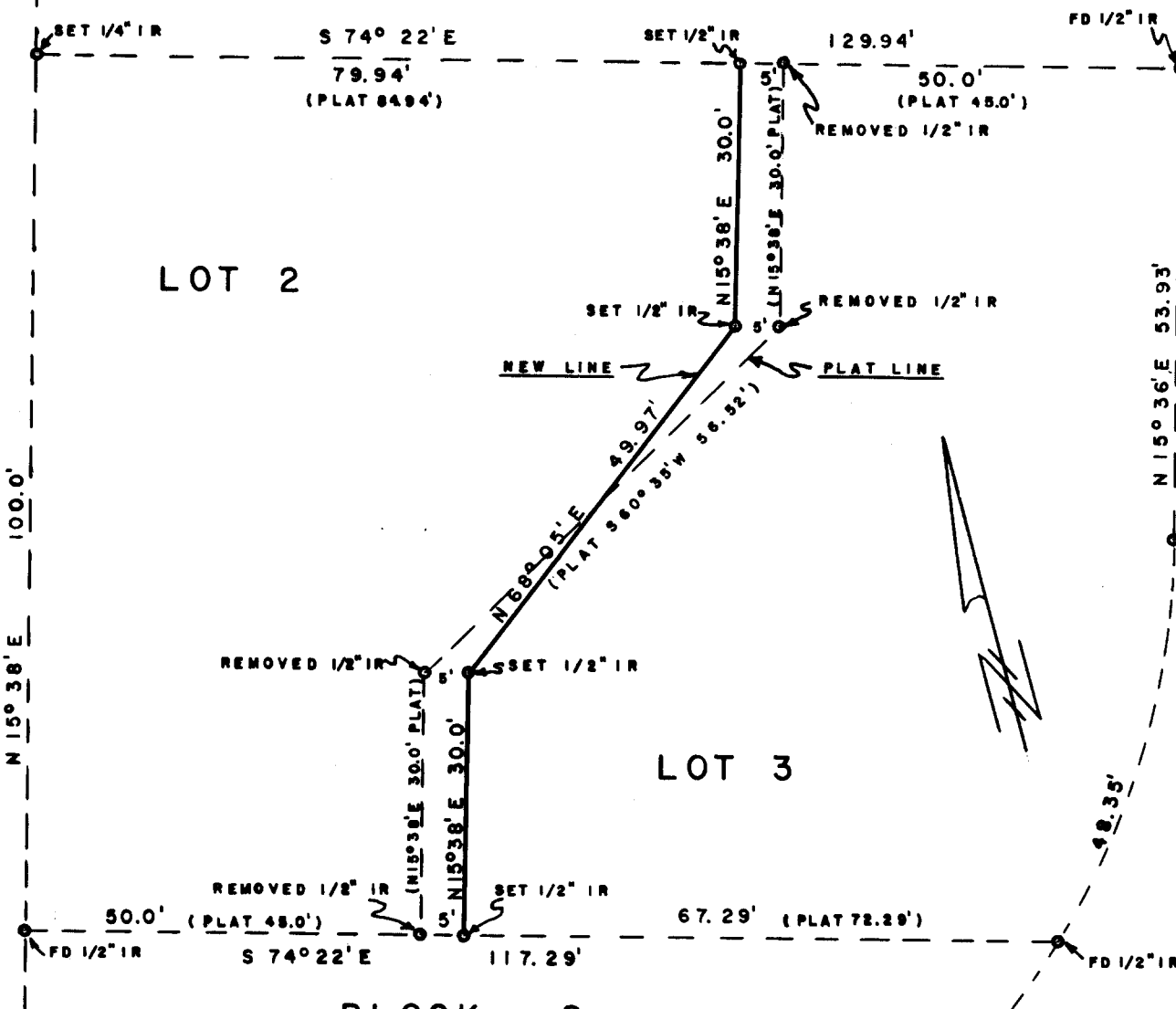


24/15

W. SUSAN ST.

W. CENTER ST.



BLOCK 2

COUNTY SURVEYOR'S FILE DATA
DO NOT REMOVE FROM FILE



FILED
RECEIVED

APR 19 1960

COUNTY SURVEYOR
DOUGLAS COUNTY, ORE.

SUBDIVISION OF LOTS 2 & 3
BLOCK 2 QUINTUS PARK
ROSEBURG, OREGON

SURVEY BY K.A. MENG
DRAWN BY K.A. MENG

APRIL 18, 1960
1" = 20'

FOR IVAN EDWARDS

C.S. 51/72