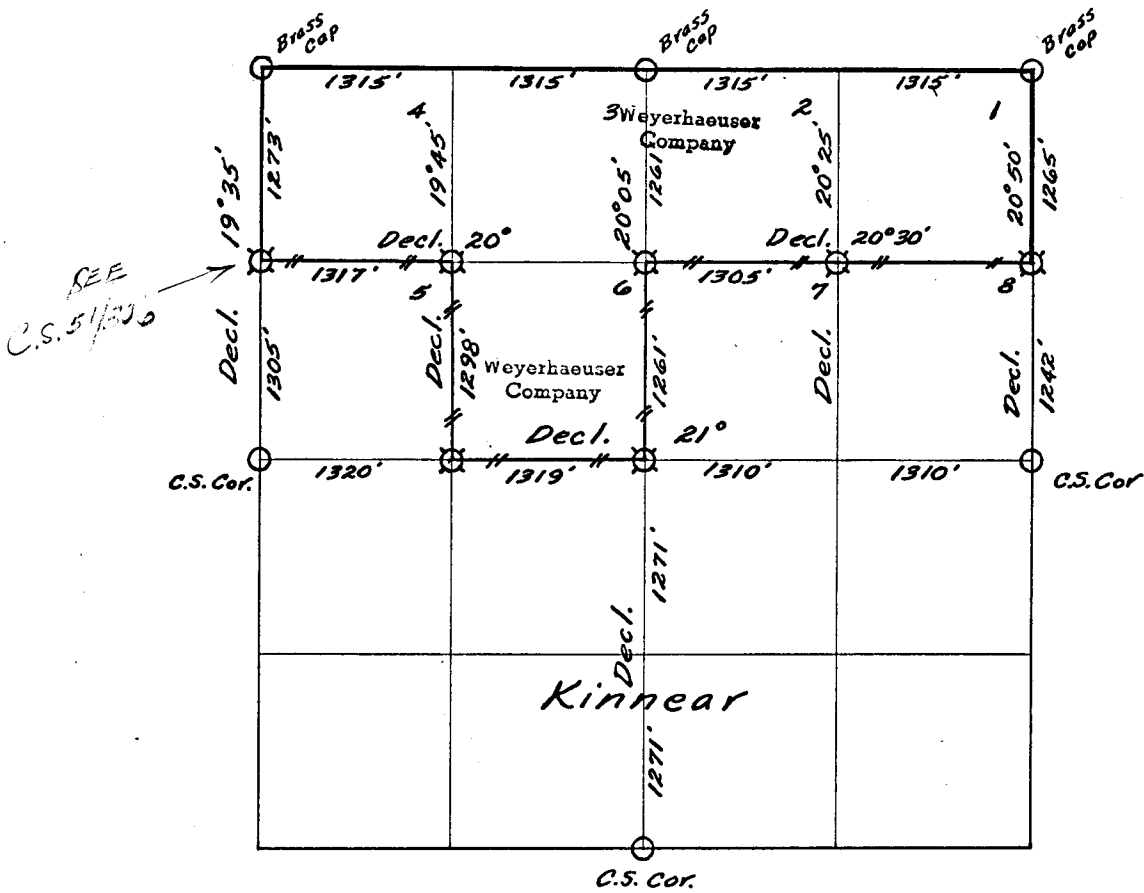


Weyerhaeuser Company

Section 2 Township 26 S Range 3 W



— // — // — Line marked by notch cut in blaze

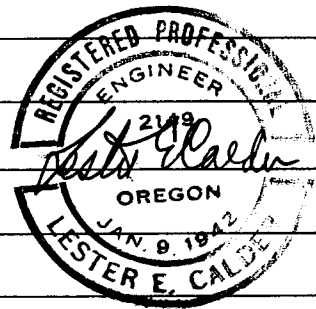
- Known corner
- ◻ Referenced corner

This subdivision was made by staff compass and abney slope chain survey

This survey was made jointly by Lester E. Calder, Oregon Licensed Engineer
Reg. No. 2149 for Weyerhaeuser Timber Company and Harry D. Kinnear

Helpers: Harry D. Kinnear

S. Endres (Klahanee Lbr. Co.)



Dates of survey August 1943 Date filed for record & where December 1962

Distribution Douglas County Surveyor's Office

W.Co.-Spfld.-Survey File
" " -Land Dept. File

H. D. Kinnear

Reported December 14, 1962

By _____

35|36
2|1

Corner common to Sections 35 and 36-25S-3W and
1 and 2-26S-3W

Brass cap	1943		Found
20" Fir	N 30° E	8 lks	Found
24" Fir	S 72° E	81 lks	Found
20" Fir	S 84° W	50 lks	Found
20" Fir	N 57½° W	40 lks	Found

35
2

¼ Corner common to Sections 35-25S-3W and
2-26S-3W

Brass cap	1943		Found
22" W. Fir	N 02½° E	23 lks	Found
50" Fir	S 51° W	54 lks	Found

34|35
3|2

Corner common to Sections 34 and 35-25S-3W and
2 and 3-26S-3W

Brass Cap	1943		Found
10" I. Ced.	N 20½° E	45 lks	Found
22" Wh. Fir	S 67° E	41 lks	Found
36" Fir	S 45° W	10 lks	Found
12" I. Ced.	N 62½° W	19 lks	Found

2
11

¼ Corner common to Sections 2 and 11-26S-3W

County Survey Corner			Found
----------------------	--	--	-------

2|1

¼ Corner common to Sections 1 and 2-26S-3W

County Survey Corner			Found
----------------------	--	--	-------

3|2

¼ Corner common to Sections 2 and 3-26S-3W

County Survey Corner			Found
Fir	N 45° W	50 lks	Found O.K. Original BT
36" Fir	S 60° E	42.8'	Found O.K.

C 1/4

Center of Section 2-26S-3W = Point "I"

Set ½" monel pipe

Referenced by Glen McChesney (Plates and "W" nails only)
Declination 20°

28" W Fir St	N 55° W	28.7'
48" I Ced St	S 57° W	24.9'

CN 1/16

Corner in Section 2-26S-3W = Point "E"

Post

Referenced by Glen McChesney (Plates and "W" nails only)
Declination 20°

24" Wh. Fir	N 17°	W	17.7'
38"	S 54°	W	34.5'

CW 1/16

Corner in Section 2-26S-3W = Point "J"

Post

Referenced by Curtis Price (Plates and "W" nails only)
Declination 20°

28" Fir	N 78°	E	37.5'
19" Fir Stp.	N 54°	W	11.4'

NE 1/16

Corner in Section 2-26S-3W = Point "F"

Post

Referenced by Glen McChesney (Plates and "W" nails only)
Declination 20°

38" Fir	N 24°	E	31.2'
12" I. Ced.	S 41°	E	10.0'

N 1/16

Corner common to Sections 1 and 2-26S-3W = Point "G"

Post

Referenced by Glen McChesney (Plates and "W" nails only)
Declination 20°

16" Fir	S 19°	W	12.1'
12" Fir	N 13°	W	28.5'

NW 1/16

Corner in Section 2-26S-3W = Point "D"

Post

Referenced by Lester Calder (Plate only)
Declination 20°

36" Fir	S 87°	E	28.2'
---------	-------	---	-------

N 1/16

Corner common to Sections 2 and 3-26S-3W = Point "C"

Post

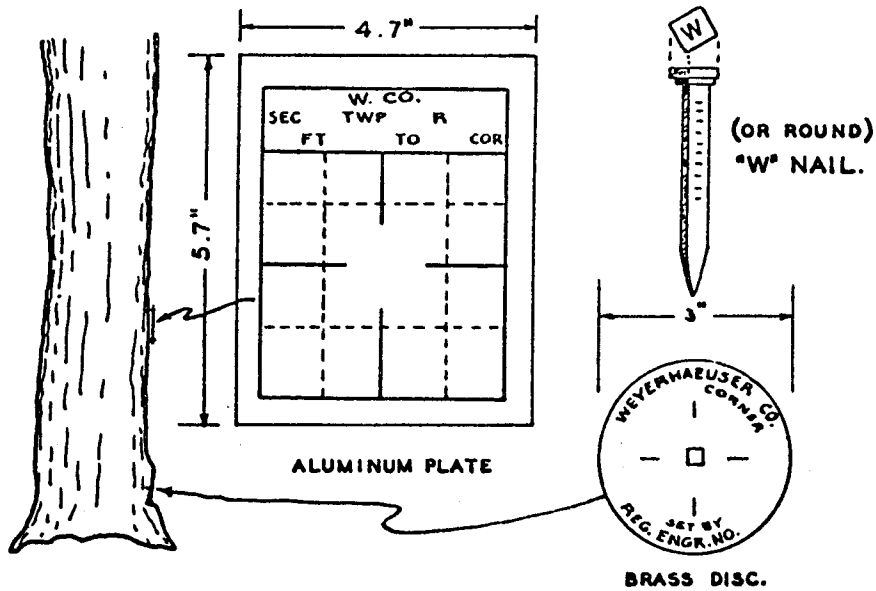
Referenced by Lester Calder (Plate only)
Declination 20°

SEE
SUPERCEDED - C.S. 51/306

50" Fir N 30° W 31.6'

WEYERHAEUSER COMPANY CORNER REFERENCE METHOD

A "W" nail driven thru the hole in a brass disc, into a notch cut low on a tree, stamped with the Oregon registered land surveyor or professional engineer registration number. An embossed aluminum plate nailed head high on same tree with 8d aluminum nails, with distance and bearing from the "W" nail to the corner stamped on it.



FILED
RECEIVED

MAY 16 1963

COUNTY SURVEYOR
DOUGLAS COUNTY, ORE.