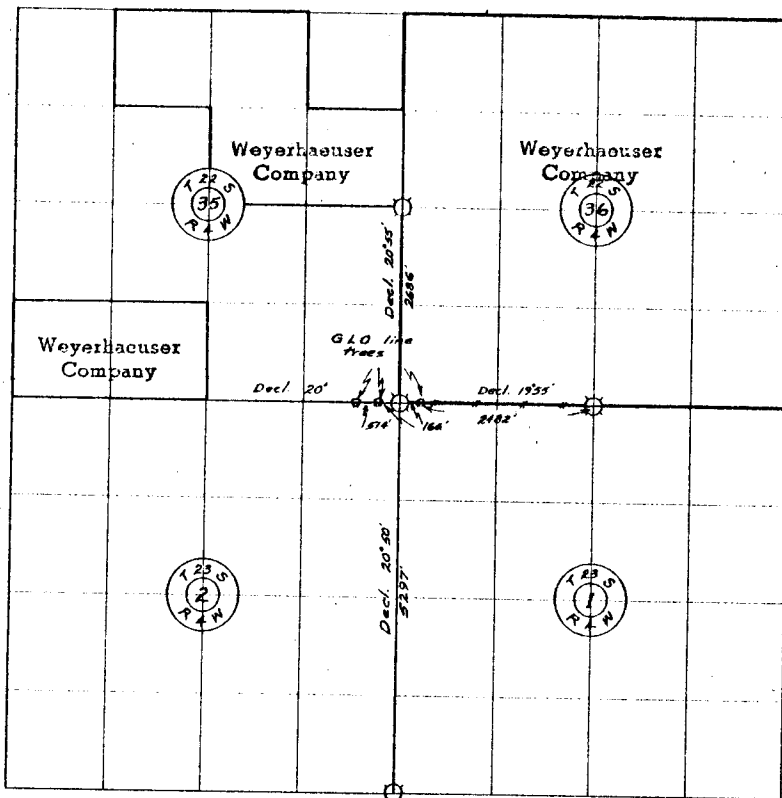


Lane Co.

Weyerhaeuser Company

Section 36 Township 22 S. Range 4 W.



E 2 1/2 11/12 of 723-4

— # — # — Line marked by notch cut in blaze

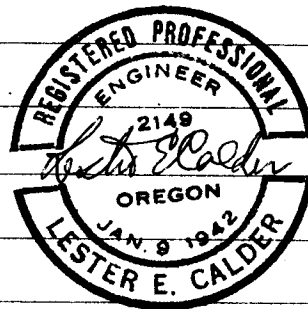
○ Known corner

⊗ Referenced corner

Staff compass and abney slope chain survey.

This survey was made for Weyerhaeuser Company by Glen McChesney under the supervision of Lester E. Calder, Oregon Licensed Engineer, Registration No. 2149.

Helpers: Robert Barta
Robert Metzger



Dates of survey Dec. 1959 - Feb. 1960 Date filed for record & where April, 1960

Distribution W.Co.-Springfield Land Dept. Lane and Douglas County Surveyors Offices

" - " Survey File

" -Tacoma Land Records

BLM-Eugene

Reported March 31 19 60

By Glen McChesney

35 | 36
2 | 1

Corner common to Sections 35 and 36-22S-4W
Sections 1 and 2-23S-4W

A preliminary search did not develop any evidence of this corner.

Following is a report on the survey work which was done to re-establish said corner.

By careful retracement of the Township line to the East and West, the Original Line Trees were found and the corner was re-established at the proportionate distance between these Original Line Trees.

To substantiate the location here used, the following record was made:

From Re-established Corner:

GLO Record 165' East to Line Tree - Weyerhaeuser Company Measurement 166'
GLO Record 165' West to Line Tree - Weyerhaeuser Company Measurement 166'
GLO Record 676' West to Line Tree - Weyerhaeuser Company Measurement 680'
GLO Record 5293' South to $\frac{2}{11} \frac{1}{12}$ - Weyerhaeuser Company Measurement 5297'
GLO Record 2640' West to $\frac{1}{4}$ Corner 36 & 1 - Weyerhaeuser Co. Measurement 2648'

Other record distances:

From Line Tree East of re-established corner East to creek the GLO distance is 1152'; Weyerhaeuser Company distance is 1159'.

From said creek East to $\frac{1}{4}$ corner to Sections 36 and 1 the GLO distance is 1323'; Weyerhaeuser Company distance is 1323'.

Distances to creek to South, and to and between creeks to North indicate they were never accurately taken or recorded.

There is evidence of survey work done to the West and to the South which has not been recorded, and of current active survey work to the West.

35 | 36
2 | 1

Corner common to Sections 35 and 36-22S-4W
Sections 1 and 2-23S-4W

✓ ✓ ✓ ✓

GLO Survey Record

All evidence gone

County Survey Record

All evidence gone

Nailed a 3" x 3" piece of aluminum to a 12" Fir log for corner at proportionate distance between the following identified Original Line Trees:

48" Fir East 166' 2 Notches on East and West sides
42" Fir Stmp. West 166'

Referenced by Glen McChesney (Weyerhaeuser Method)
Declination 20°

12" Red Ced.	N 32° E	22.0'
50" Fir	S 79° E	39.9'
32" R.Ced.Stp	S 02° W	31.4'
66" Fir	N 45° W	28.6'

36
1

¼ Corner common to Section 36-22S-4W
Section 1-23S-4W ✓✓✓

GLO Survey Record

Post			Gone
17" Fir	N 22° E	26 lks	38" Fir windfall - faces are up, filled with dirt and upper face rotted.
28" Fir	S 57½° W	70 lks	Remains of roots of large Fir S 58° W - 46.2'

Found 1" iron pipe 6" out of ground for corner good for distance and bearing from GLO Bearing Trees. Drove 1" x 30" aluminum pipe beside this iron pipe.

Referenced by Glen McChesney (Plates and "W" nails only)
Declination 20°

26" Fir	N 71° W	11.9'
50" Fir	S 75° W	15.6'

35 | 36

¼ Corner common to Sections 35 and 36-22S-4W ✓

GLO Survey Record

Post and Stone			Original not found
14" Cedar	N 60° W	21 lks	36" Incense Cedar-Scribing visible
5" Spruce	S 40° E	45 lks	Gone (Probably meant White Fir)

Found mound of stone around post for corner not original, good for distance and bearing from NW Bearing Tree.

Referenced by Glen McChesney (Plates and "W" nails only)
Declination 20°

14" Fir	N 89° E	10.2	
36" I.Cedar	N 60° W	13.1	(Original BT)

$\frac{2}{11} \mid \frac{1}{12}$

Corner common to Sections 1, 2, 11 and 12-23S-4W

GLO Survey Record

Post	Gone
18" Black Oak S 8° W 455 lks	Gone
24" White Oak S 26° E 617 lks	Remains of Oak moved by logging
24" White Oak N 4° W 960 lks	Remains of Oak moved by logging
74" Fir N 2½° E 6.6 lks	Gone

County Survey Record

Stone	Found with "X" on top and "CS" on South
10" Fir N 63° E 30.7'	12" x 3' Fir stub - scribing visible
30" Fir N 80° W 9.6'	32" Fir - Faces healed over.
20" Fir S 51° W 42.0'	22" Fir - Faces healed over.
28" Fir S 66° E 15.8'	36" Fir - Faces healed over.

Referenced stone as follows:

Referenced by Glen McChesney (Plates and "W" nails only)
Declination 20°

12" Fir	N 24° E	39.5'	
32" Fir	S 69° E	15.1'	CS BT
22" Fir	S 50° W	41.5'	CS BT
36" Fir	N 79° W	8.7'	CS BT

Rev. # 44

WEYERHAEUSER TIMBER COMPANY CORNER REFERENCE METHOD

A "W" nail driven thru the hole in a brass disc, into a notch cut low on a tree, stamped with the Oregon registered land surveyor or professional engineer registration number. An embossed aluminum plate nailed head high on same tree with 8d aluminum nails, with distance and bearing from the "W" nail to the corner stamped on it.

