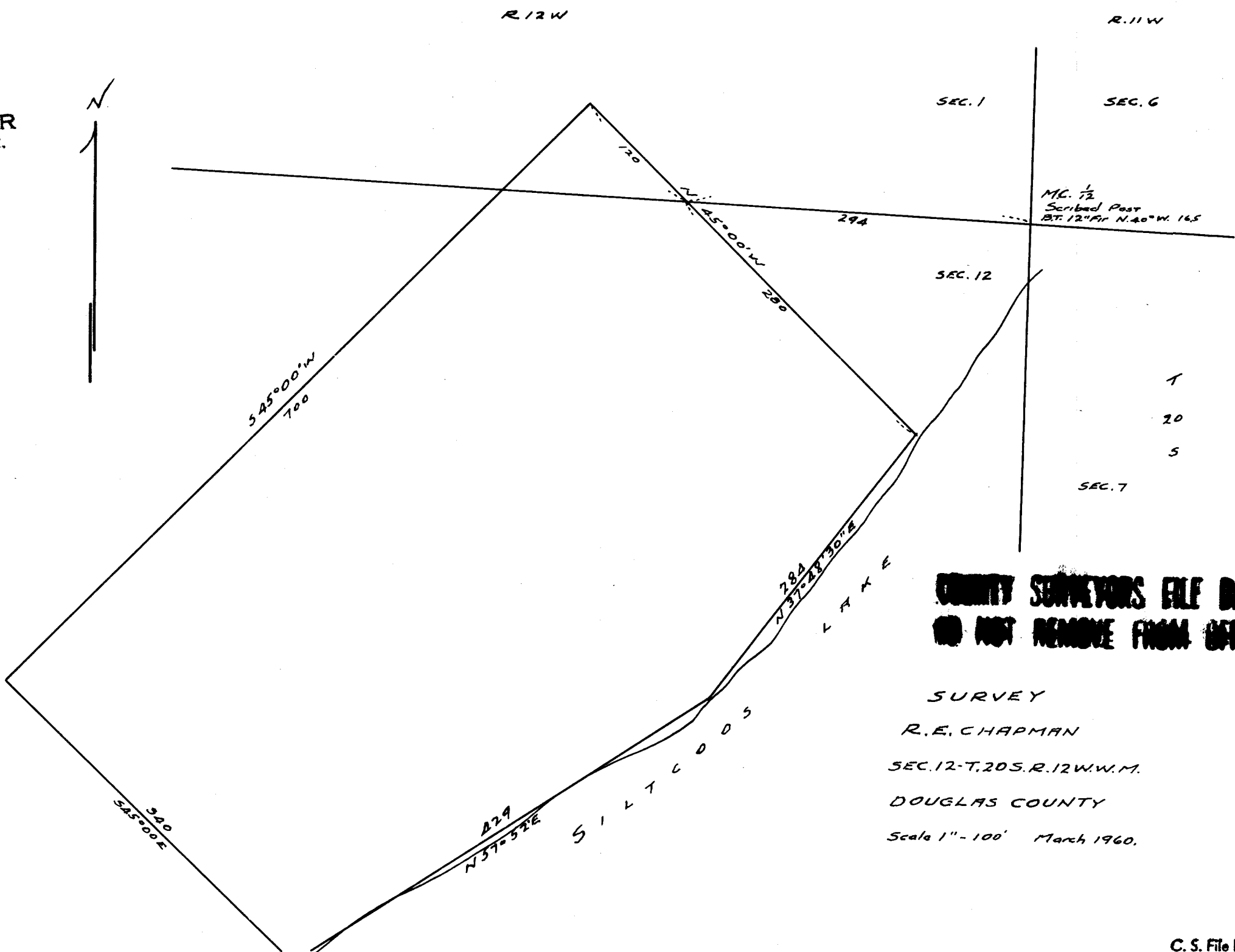


FILED
RECEIVED

MAR 31 1960

COUNTY SURVEYOR
DOUGLAS COUNTY, ORE.



1
20
5

**COUNTY SURVEYORS FILE DATA
DO NOT REMOVE FROM OFFICE**

SURVEY

R. E. CHAPMAN
SEC. 12-T, 20 S, R. 12 W, W. 1/4 M.
DOUGLAS COUNTY
Scale 1" = 100' March 1960.



C. S. File No. 51/84 P