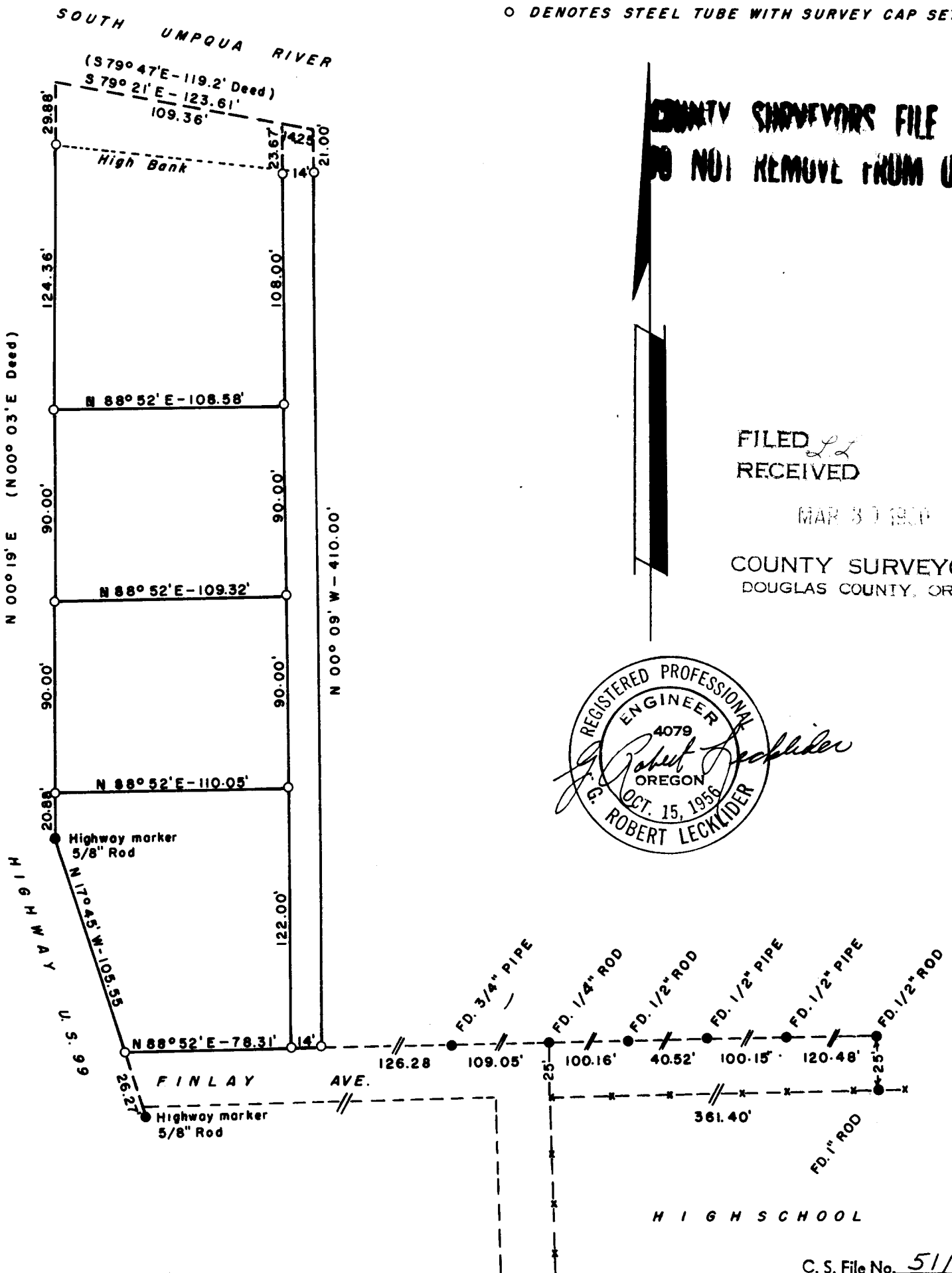


METES & BOUNDS SURVEY TO SET PROPERTY CORNERS IN JEREMIAH HUNTLEY DLC N°56 T27S, R6W, DOUGLAS COUNTY, ORE.

SURVEYED FOR: PAUL E. GEDDES
 SURVEYED BY: G. R. LECKLIDER-ENGR.

MARCH, 1960
 SCALE: 1" = 60'

- DENOTES CORNERS FOUND
- DENOTES STEEL TUBE WITH SURVEY CAP SET



COUNTY SURVEYORS FILE DATA
 DO NOT REMOVE FROM OFFICE

FILED
 RECEIVED

MAR 30 1960

COUNTY SURVEYOR
 DOUGLAS COUNTY, ORE.

